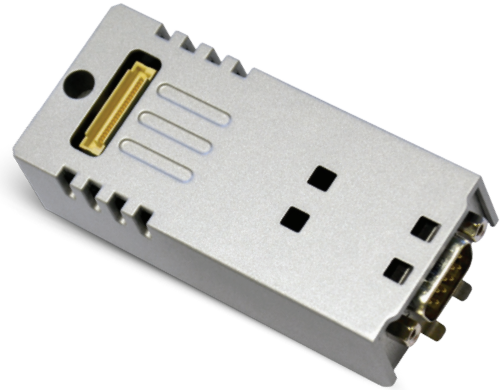


# PLCM01 Tech-Note

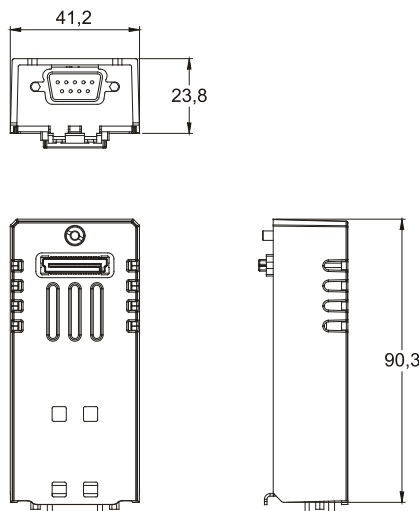
## Plug-in module CAN

PLCM01 is a plug-in module for use in all cases when CAN communication is required with JMobile or CODESYS runtime. The plug-in is compatible with Series 500, 500G, 600, eX and eXware.



- CAN interface (V2.0A and V2.0B)
- Max speed 1 Mb
- Optical isolation
- Plug-in bus extender (selected models)
- DB9 connector

Environmental Conditions	
Operating temperature	-20° to +60°C
Storage temperature	-20° to +70°C
Operating and storage humidity	5 - 85 % relative humidity, non-condensing
Protection class	IP20
Approvals	
CE	Emission EN 61000-6-4, Immunity EN 61000-6-2 for installation in industrial environments, Emission EN 61000-6-3, Immunity EN 61000-6-1 for installation in residential environments
UL	cULus: UL508
UL	cULus: Class I Div. 2
ATEX	Yes
IECEX	Yes
DNV-GL	Yes
LR	Yes
EU MR	Yes
RCM	Yes



## Ordering Information

Model	Part Number	Description
PLCM01	+PLCM01U0P1	Plug-in module CAN
PLCM01-CDS	+PLCM01U0P2	Plug-in module CAN + CODESYS V2
PLCM01-NE	+PLCM01U0P3	CANopen module without bus extension connector
PLCM01-NEC	+PLCM01U0P4	CANopen module without bus extension connector + CODESYS V2