

### How to use the SquirrelView software with the SQ2010/SQ2020/SQ2040 Data Loggers.



<a href="#">SquirrelView Help</a>	Page 2
<a href="#">Connecting Your Squirrel Data Logger</a>	Page 2
<a href="#">Logger Set-up</a>	Page 3
<a href="#">Download Data</a>	Page 8
<a href="#">Export Data</a>	Page 11
<a href="#">Downloading Alarm Data</a>	Page 15
<a href="#">Setting a Start and Stop Logging Action</a>	Page 18
<a href="#">Setting an Alarm Action</a>	Page 25
<a href="#">Sample Alarm Circuit</a>	Page 30
<a href="#">Meter Mode</a>	Page 31
<a href="#">Online Metering Direct to Excel</a>	Page 36
<a href="#">Engineering Units</a>	Page 38
<a href="#">4 to 20mA Connections</a>	Page 41
<a href="#">Sensor Power Supply</a>	Page 45

**Grant Instruments  
(Cambridge) Ltd**  
Shepreth  
Cambridgeshire  
SG8 6GB

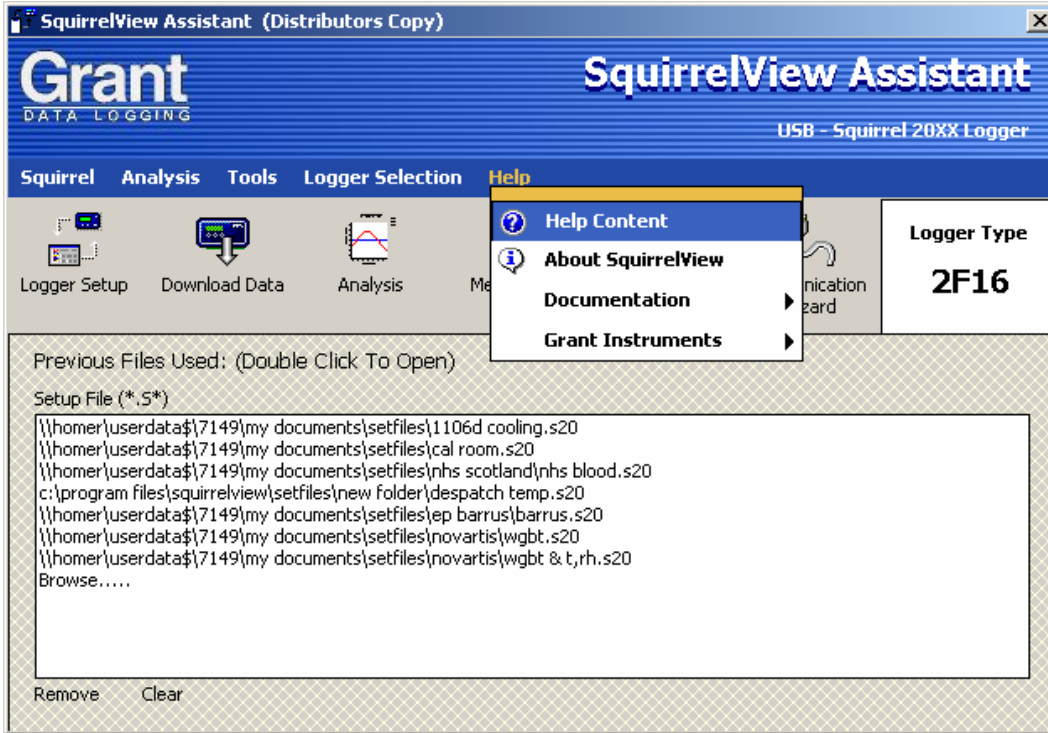
Tel: 01763 260811  
Fax: 01763 262410

Reference No:

中国代理商：  
广州虹科电子科技有限公司  
广州市五山华南理工大学国家科技园  
2 号楼504-505室 邮编：510640  
电话：020-38743030; 38743032  
传真：020-38743233  
sales@hkaco.com  
www.hkaco.com

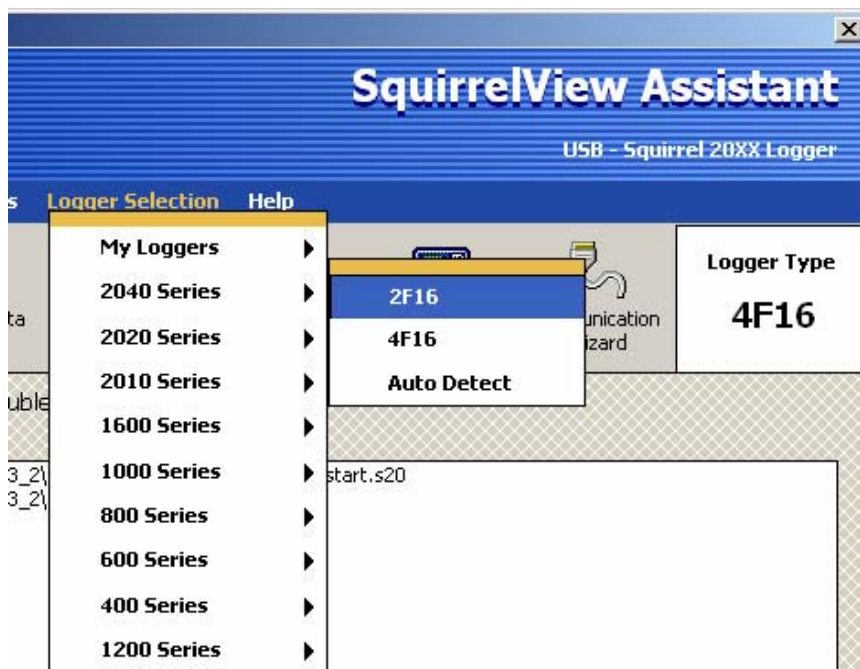
### Squirrelview Help

**Note:** There is an extensive Help file within Squirrelview for information on using the software and logger.



### Connecting Your Squirrel Data Logger

First you need to select the correct logger model

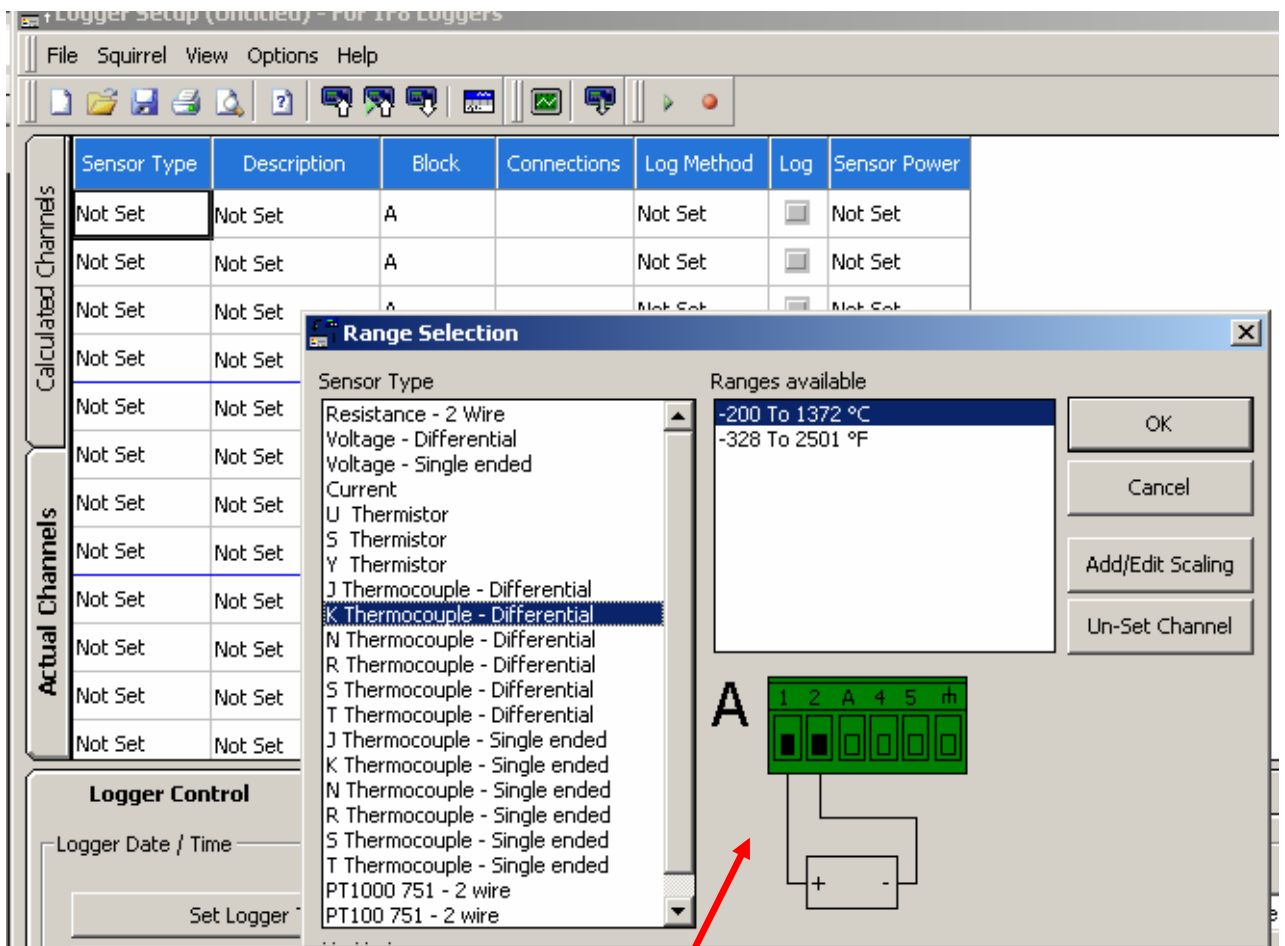


### Logger Set-up

To start setting up the channels of the data logger click on the *Logger Setup* button.



Choose your sensor input from the selection range.



Connect the sensor as shown in the diagram.

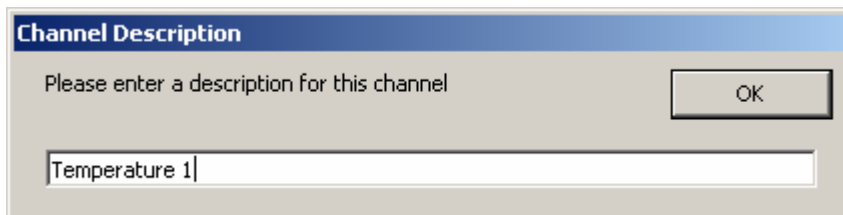
# DATA ACQUISITION

## Hints and Tips

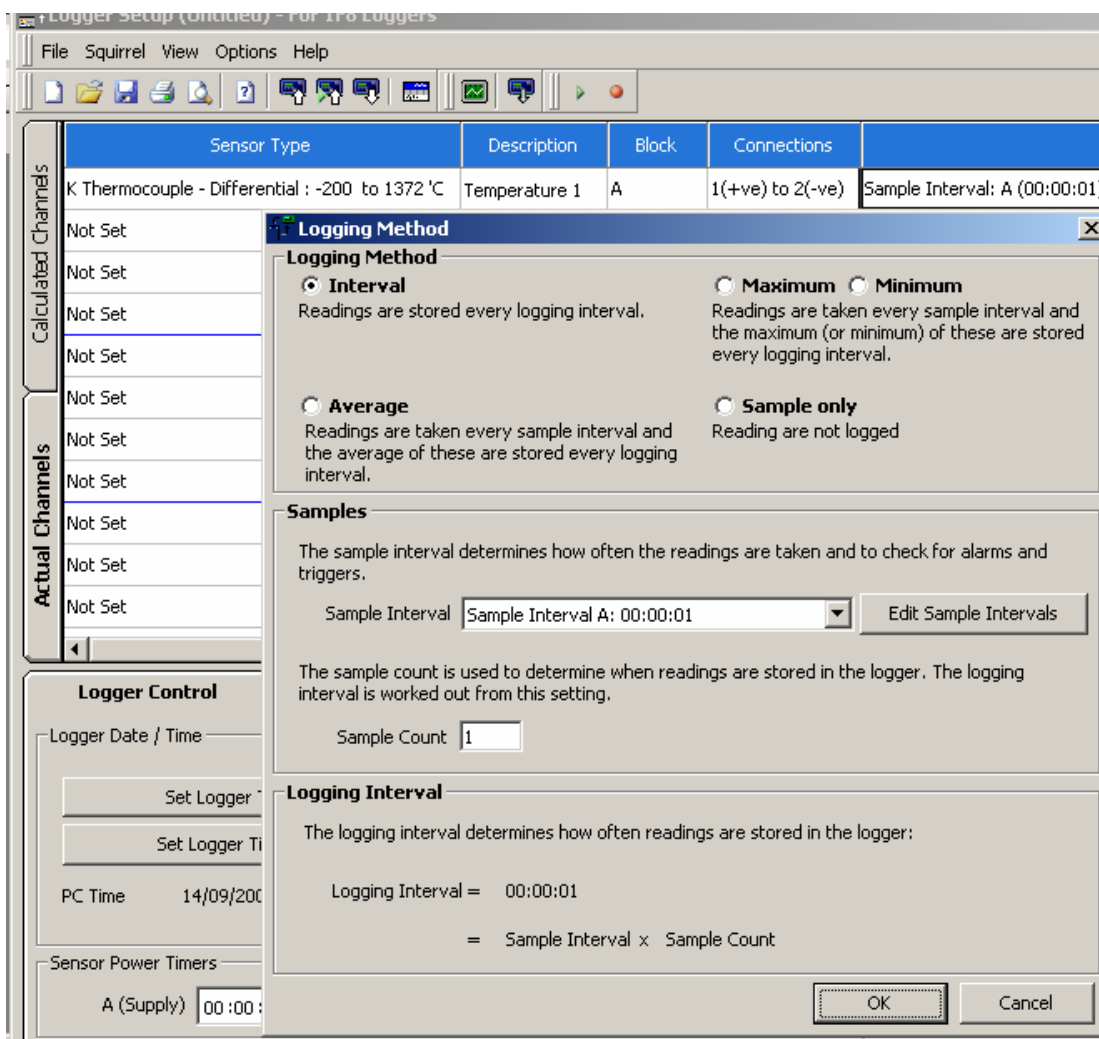


- Squirrels loggers use the "Screw Terminal", (ST) 5.0 mm pitch plug and header connector system.
- Sensors are connected to screw terminal plug-in terminal blocks. Blocks of 3, 4 or 6 with cable strain relief

You will need to give the sensor input a description..



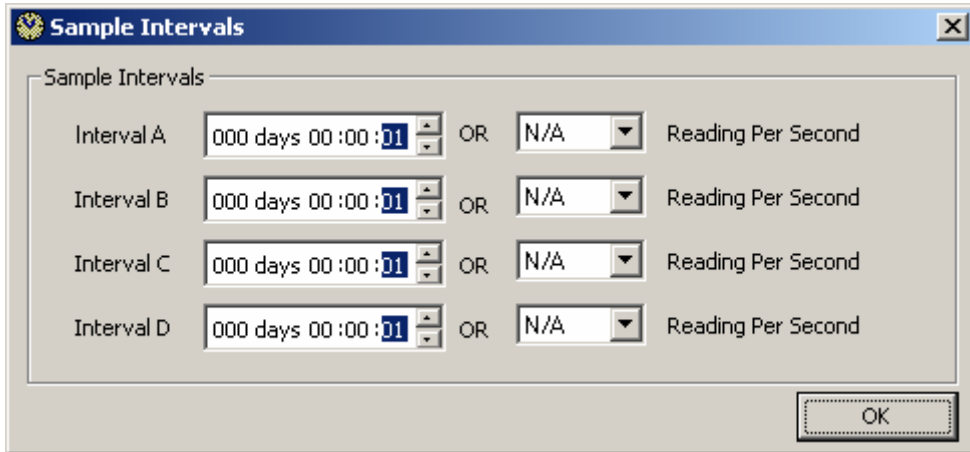
Select logging method and interval required (channels can be at different speeds).



# DATA ACQUISITION

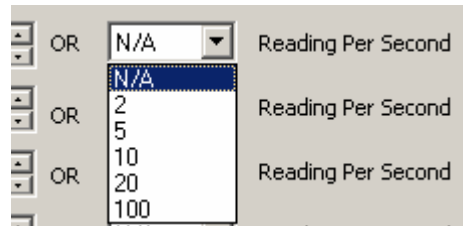
## Hints and Tips

To alter the sample intervals select the Edit Sample Intervals button

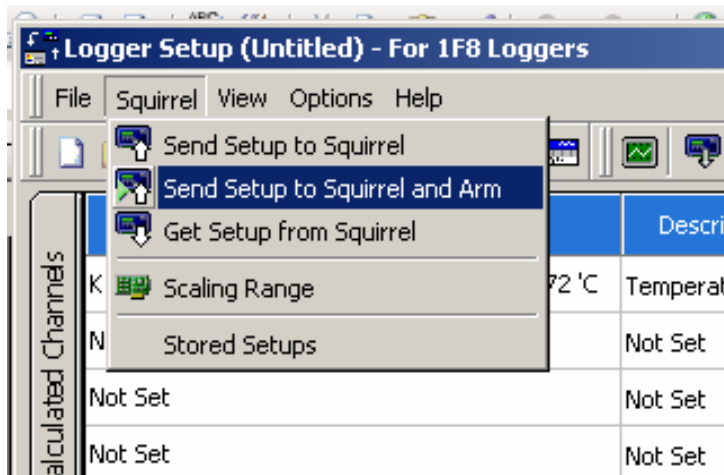


There is an option to run at sub second intervals.

**Note:** Only 10 readings per Second on the SQ2010 Loggers



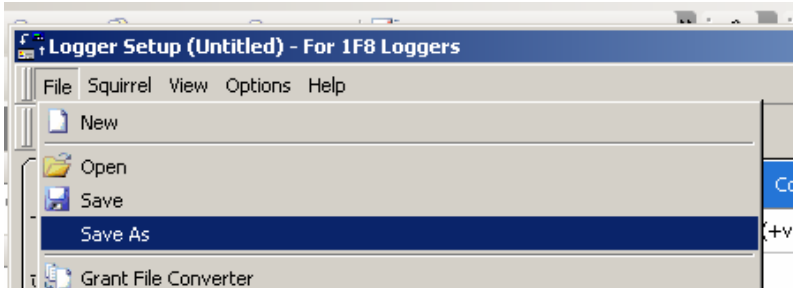
To send the setup to the logger and start logging go to Squirrel and Send Setup to Squirrel and Arm.



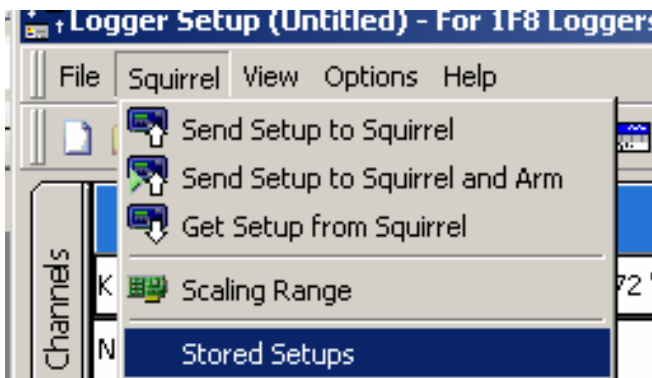
# DATA ACQUISITION

## Hints and Tips

The Setup can be saved on your PC by:



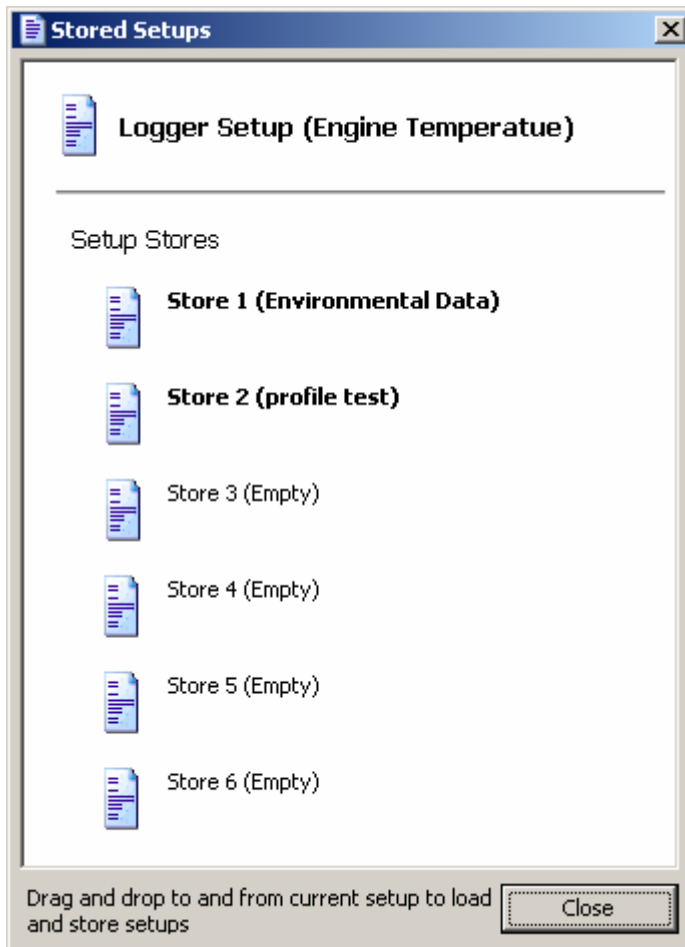
And click *Stored Setups* to store in the logger:



# DATA ACQUISITION

## Hints and Tips

The logger can hold up to six different setups.



Even more setups can be stored on removable MMC card.

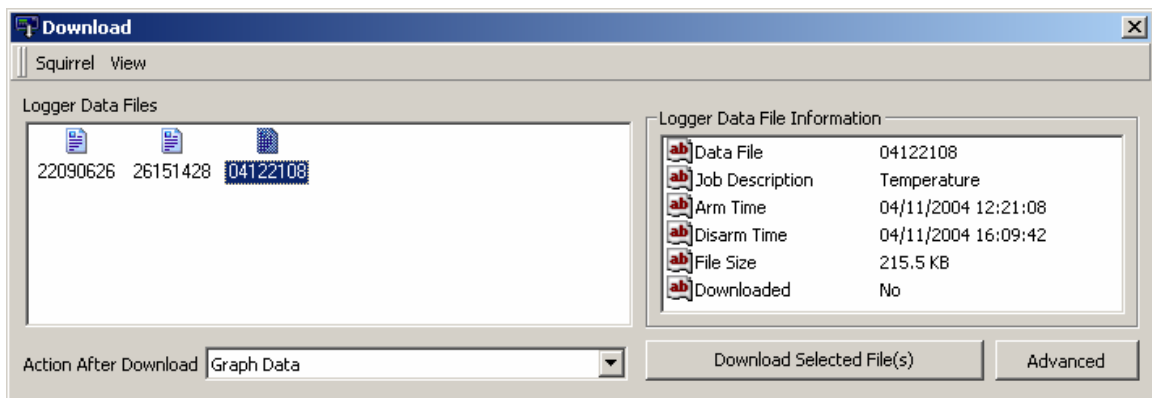
[Return To Index](#)

### Download Data

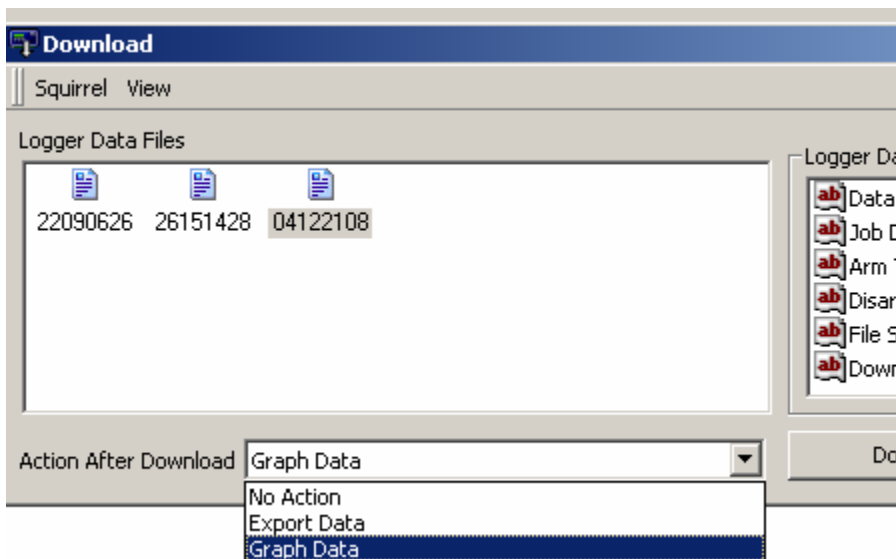
To start the download of data click *Download Data* button



Select the required Data file

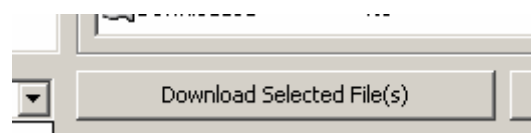


Select the Action after Download



(**Note** this action can be set as default in Tools / Download Settings).

Select the *Download Selected File(s)*

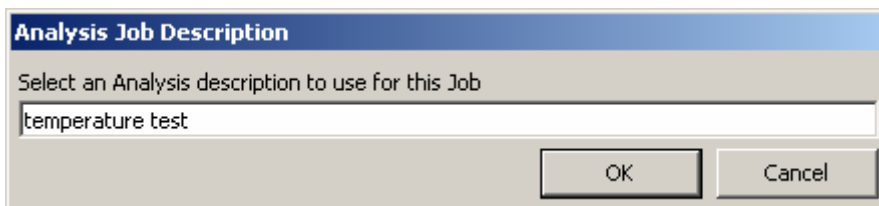
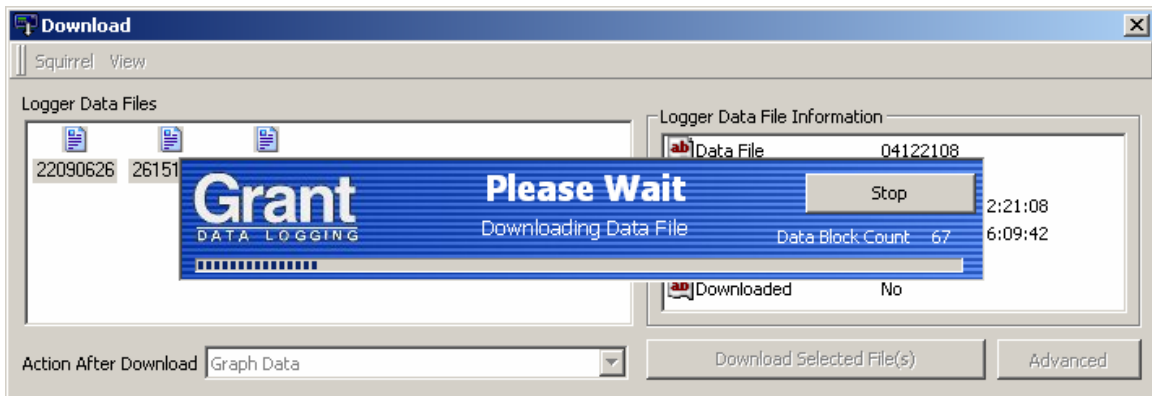
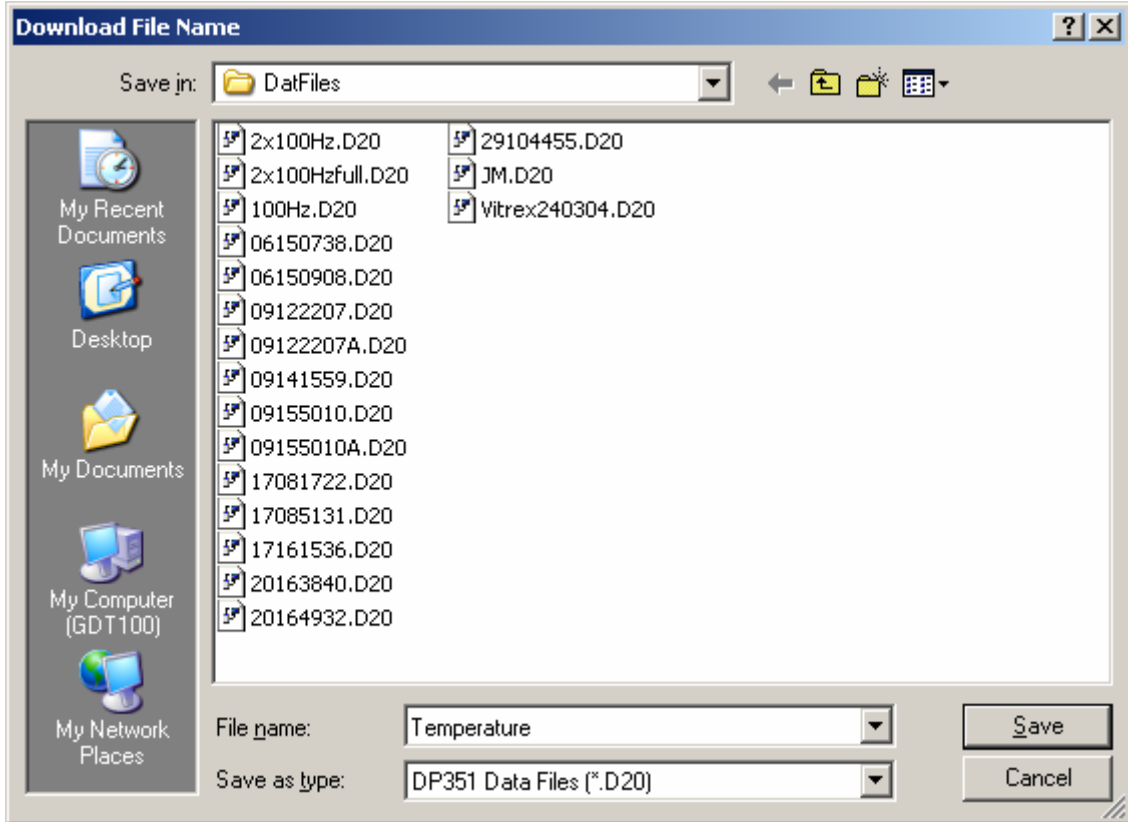




# DATA ACQUISITION

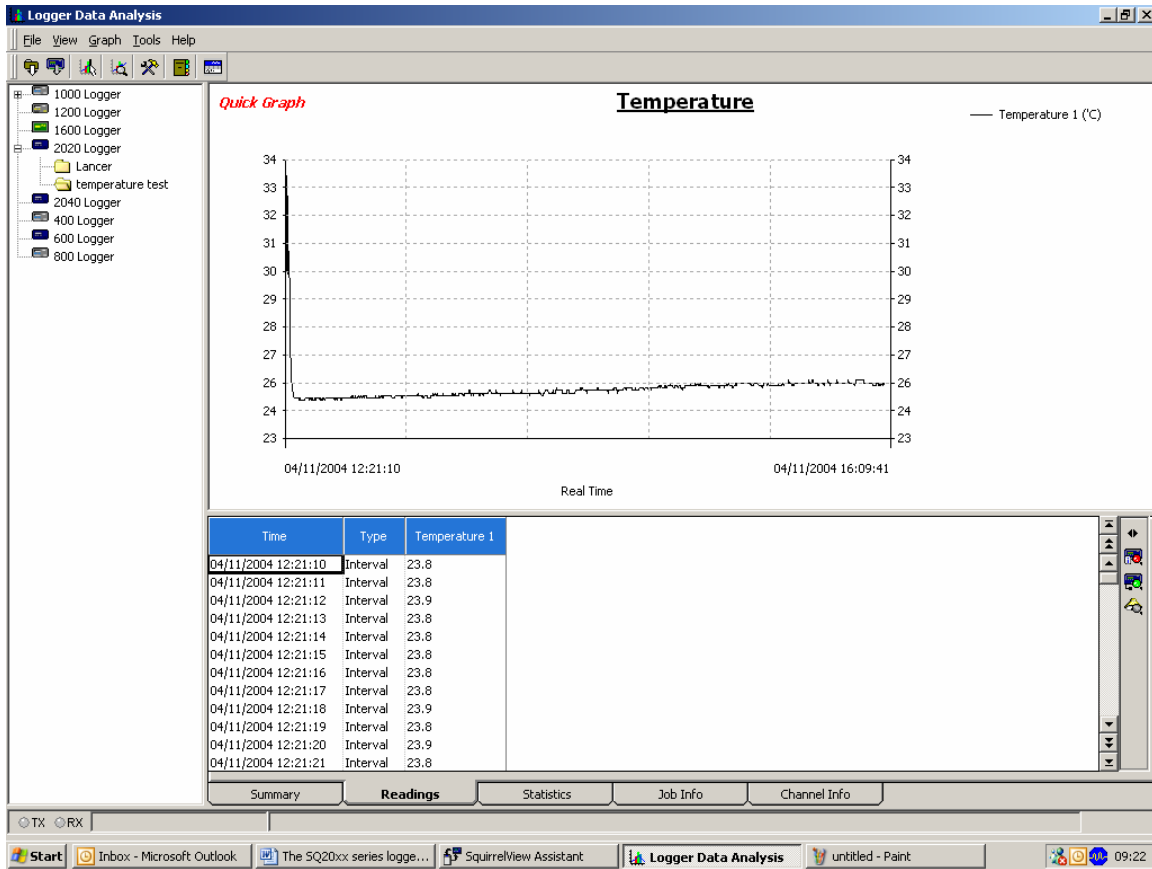
## Hints and Tips

Give the File a name and Save.



# DATA ACQUISITION

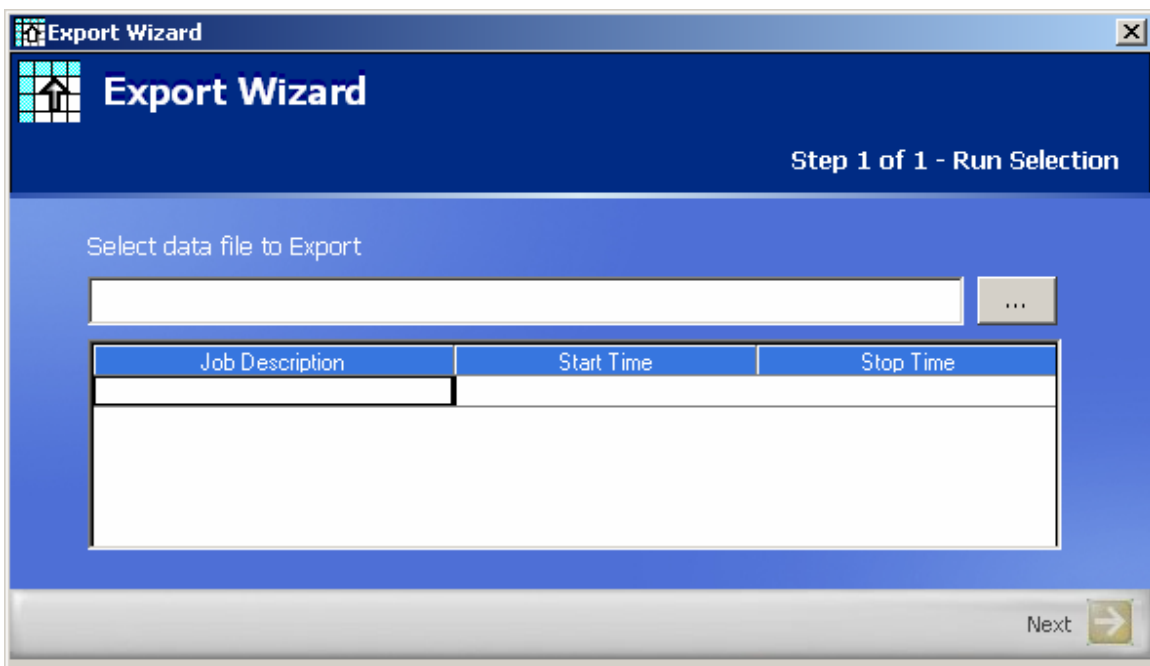
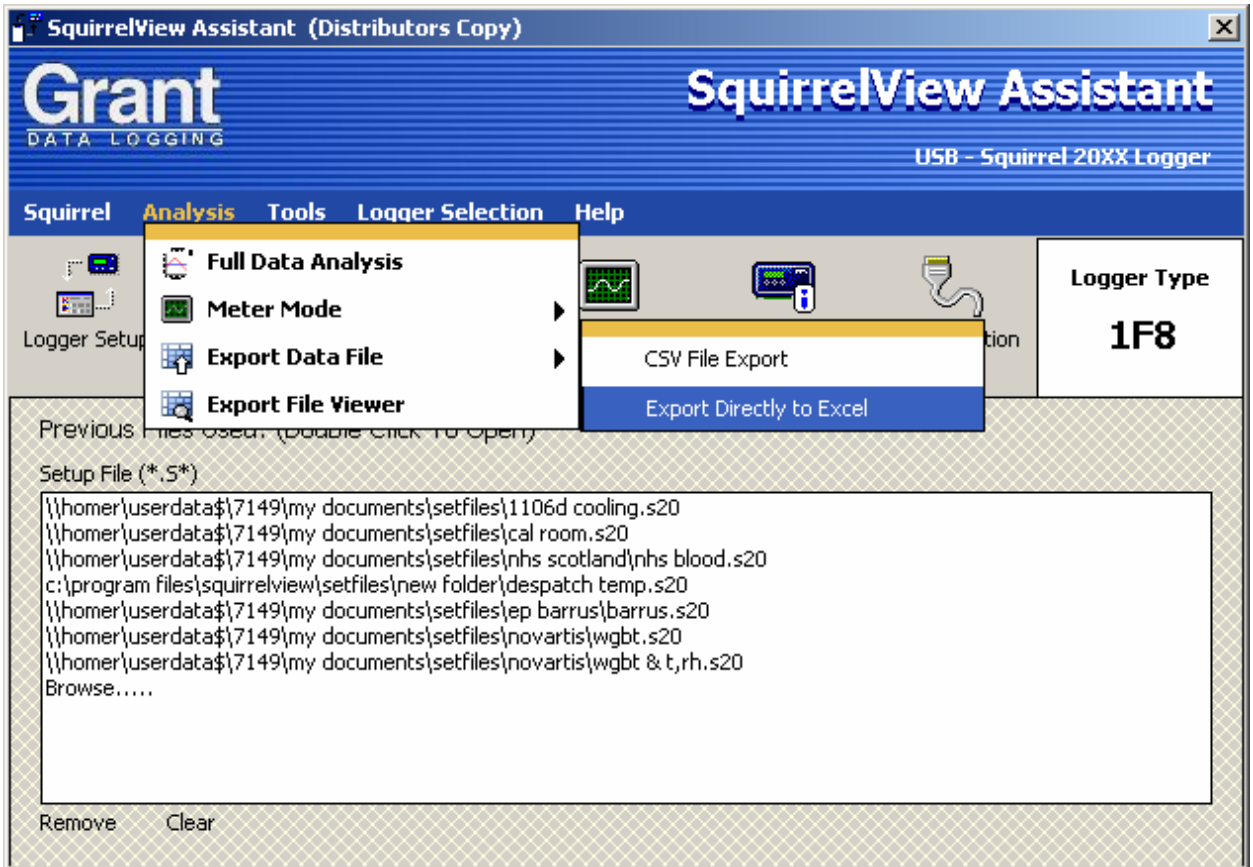
## Hints and Tips



[Return To Index](#)

### Export Data

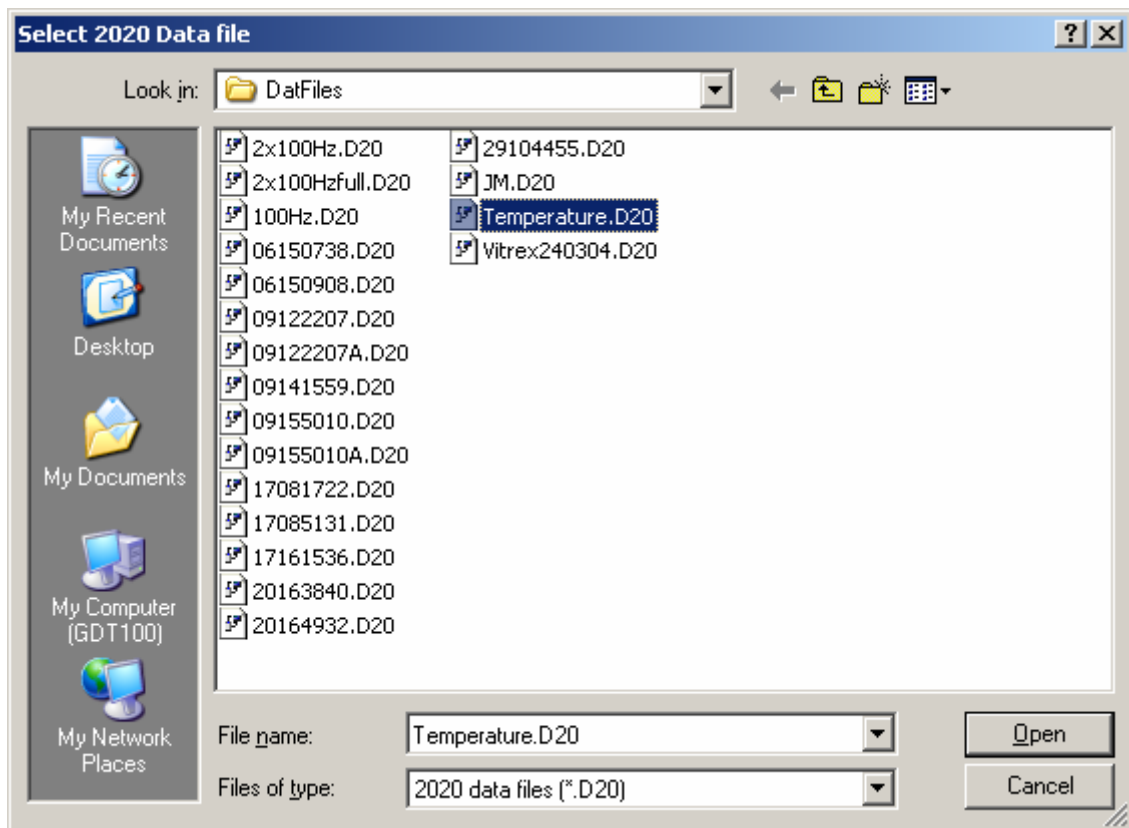
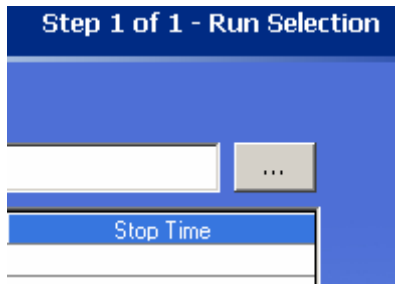
To export you data into excel



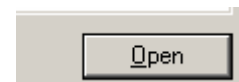
# DATA ACQUISITION

## Hints and Tips

### Browse for File

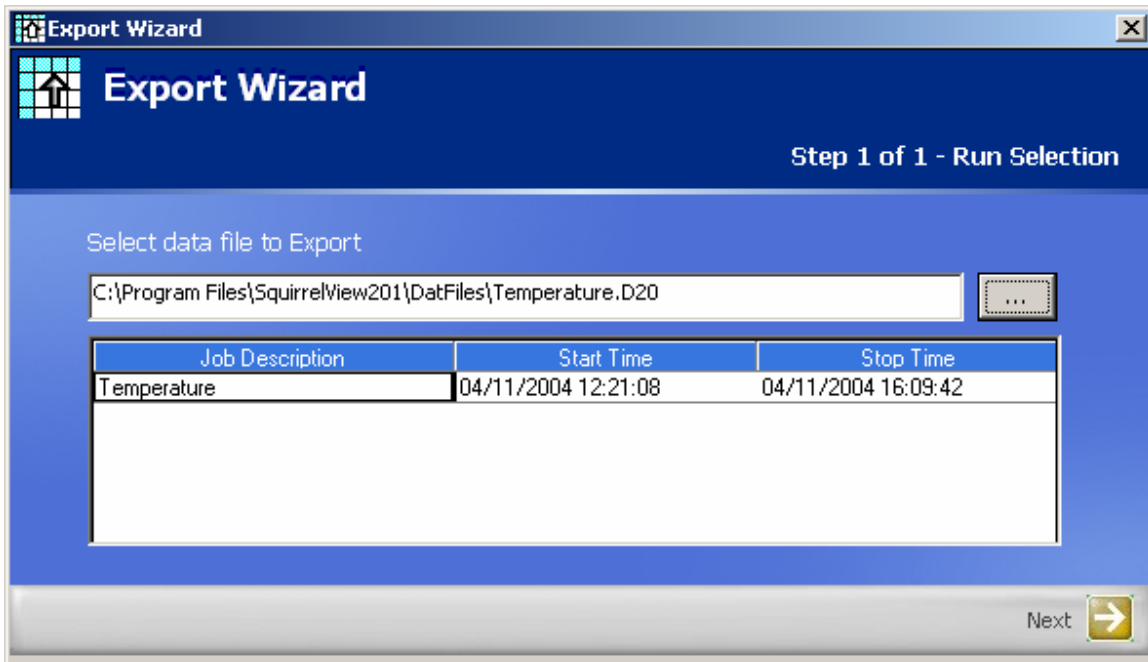


Choose the particular data file you wish to export and click.

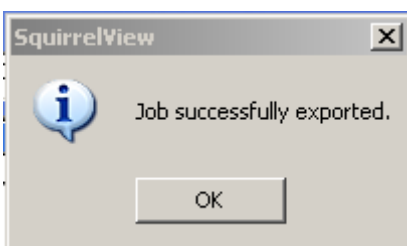


# DATA ACQUISITION

## Hints and Tips



Follow through the steps, and click the *Next* and *OK* buttons as required.



# DATA ACQUISITION

## Hints and Tips

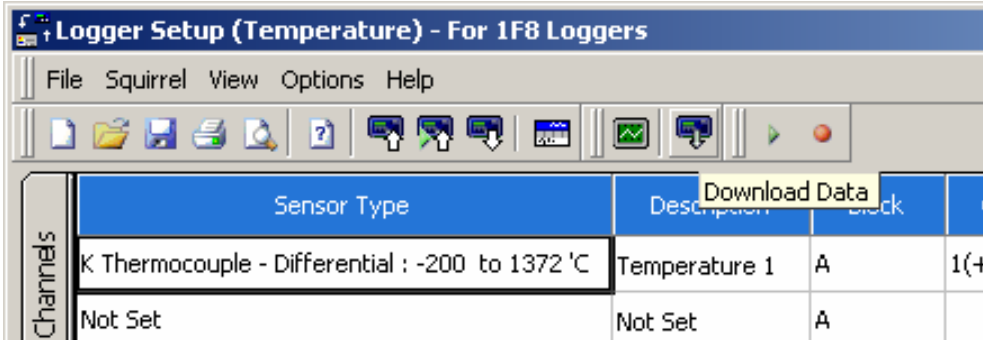
The following spreadsheet will be displayed.

Logger Details:			
1	Logger Details:		
2	Logger Type	2F8	
3	Serial Number	KS0345001	
4	Controller Firmware	2	
5	Acquisition Firmware	2	
6	Logger ID	Logger ID	
7			
8	Job Details		
9	Number of Analogue Channels	2	
10	Number of Digital Channels	0	
11	Total Number of Channels Used	2	
12			
13	Arm Time	11/04/2004 12:21	
14	Disarm Time	11/04/2004 16:09	
15	Duration	03:48:34	
16	Job Description	Temperature	
17	Readings per Channel	13712	
18			
19			
20	Channel Details		
21	Description	Temperatu	Ref. Junction 1 (°C)
22	Sample Interval	00:00:01	Not Logged
23	Logging Interval	00:00:01	Not Logged
24			
25			
26	Date/Time	Type	Temperature 1 (°C)
27	04/11/2004 12:21:10	Interval	23.8
28	04/11/2004 12:21:11	Interval	23.8
29	04/11/2004 12:21:12	Interval	23.9
30	04/11/2004 12:21:13	Interval	23.8
31	04/11/2004 12:21:14	Interval	23.8
32	04/11/2004 12:21:15	Interval	23.8
33	04/11/2004 12:21:16	Interval	23.8
34	04/11/2004 12:21:17	Interval	23.8

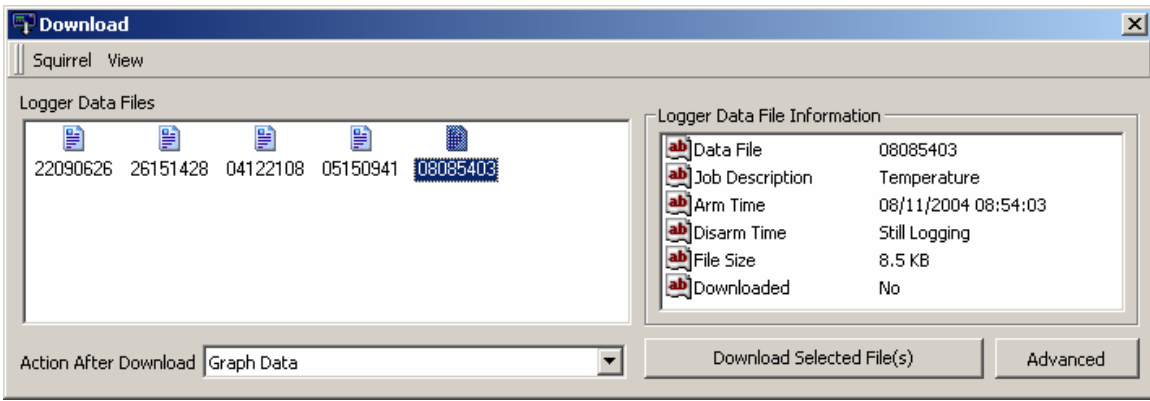
[Return To Index](#)

### Downloading Alarm data

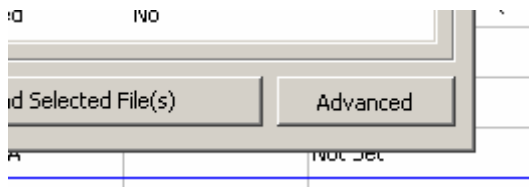
To download the alarm data select the *Download Data* button.



Select the required Data File.

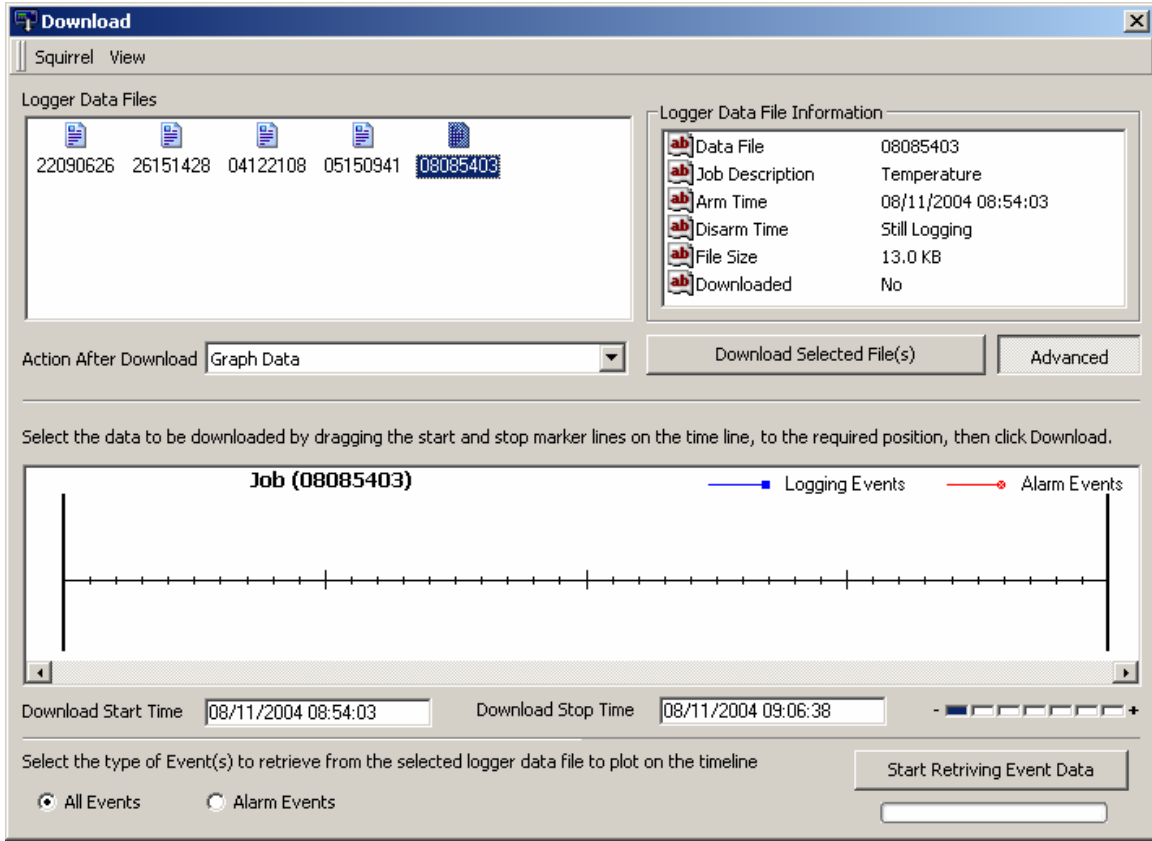


Click on the *Advanced* button.

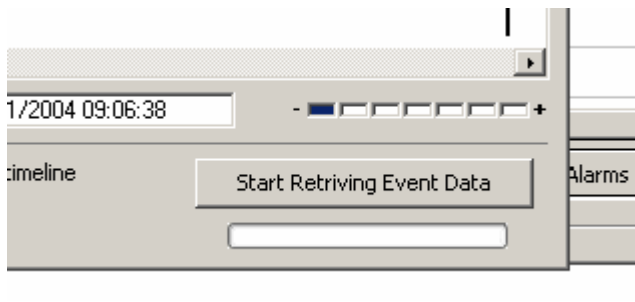


# DATA ACQUISITION

## Hints and Tips



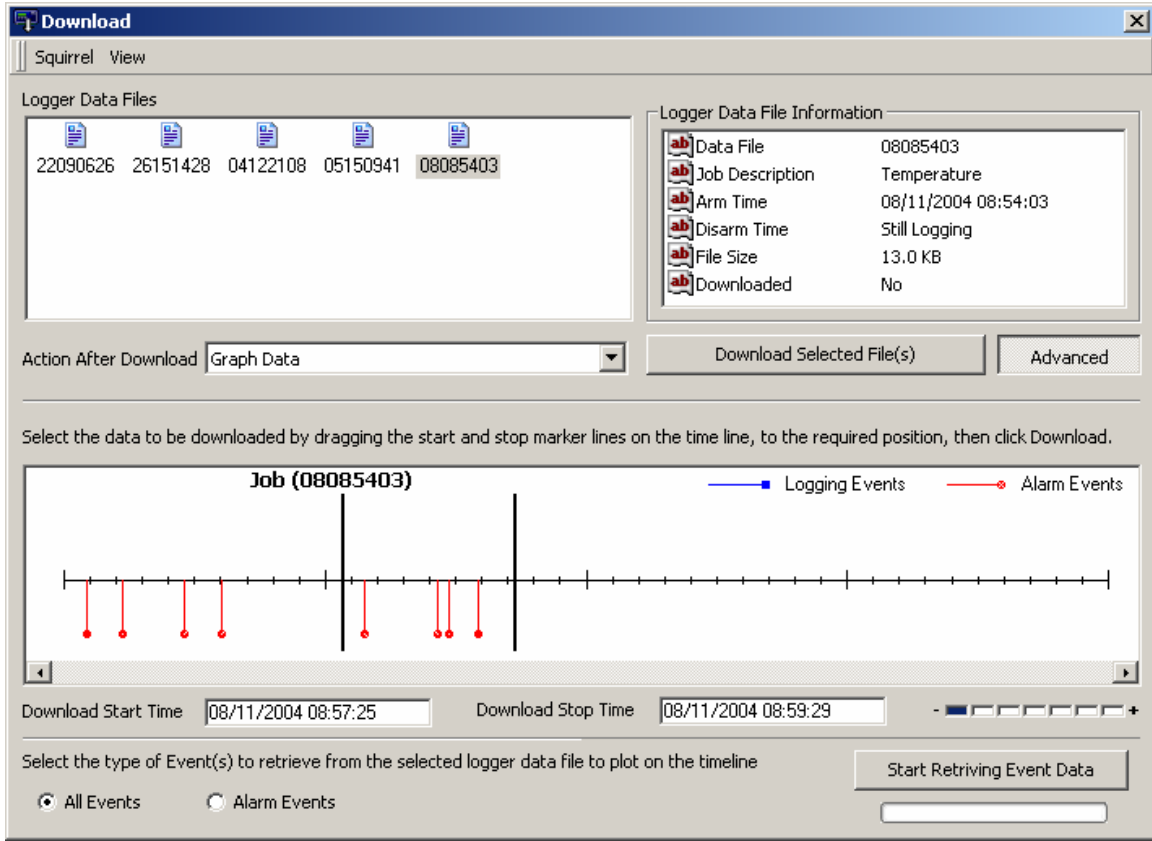
Click on the *Start Retrieving Event Data* button.





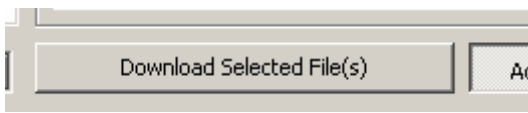
# DATA ACQUISITION

## Hints and Tips



The two side vertical lines can be dragged to section that you want to download

Click the *Download Selected File(s)* button.

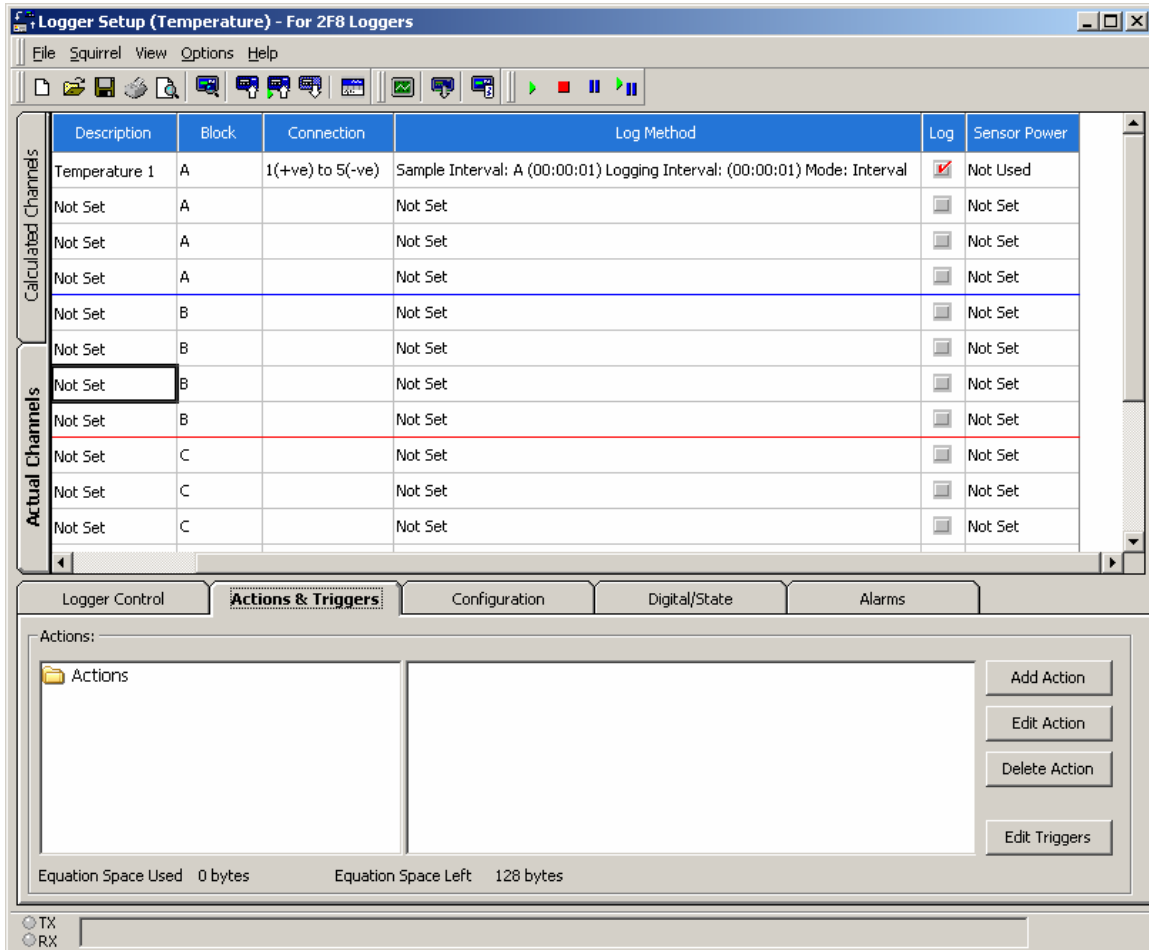


[Return To Index](#)

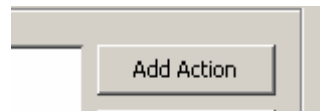
### Setting a Start and Stop logging action

This example uses the event input to start and stop logging on an action.

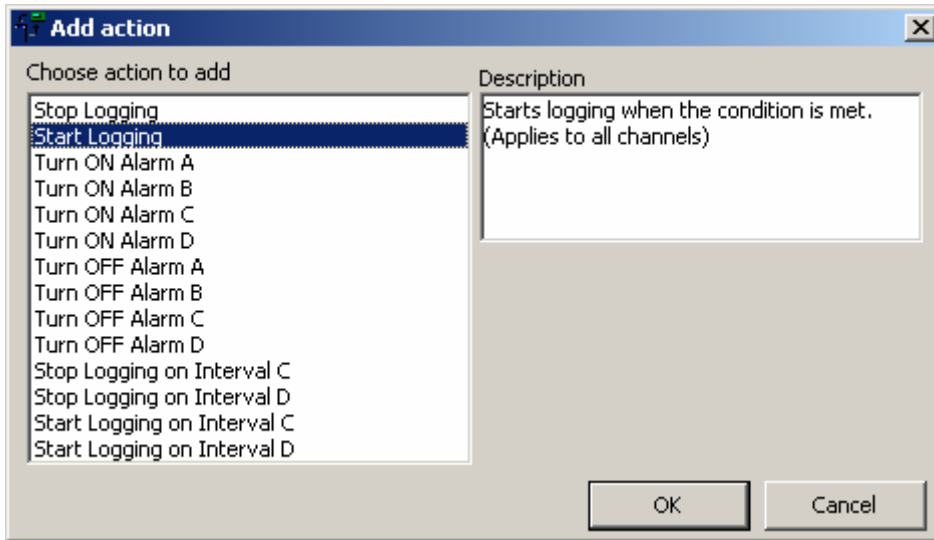
In Setup Screen Click on the *Actions & Triggers* tab



Click on the *Add Action* button.



To add the start action select the Start Logging action

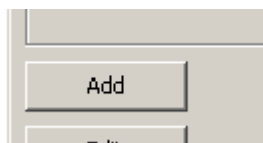


Click on the *OK* button.

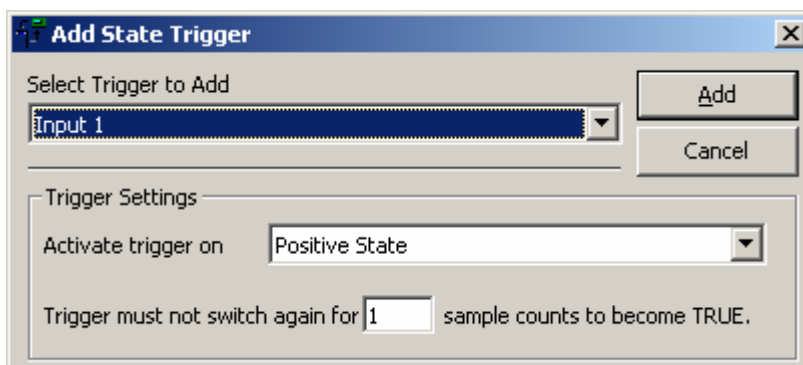
Select the State tab



And click on the *Add* button.



Select input 1

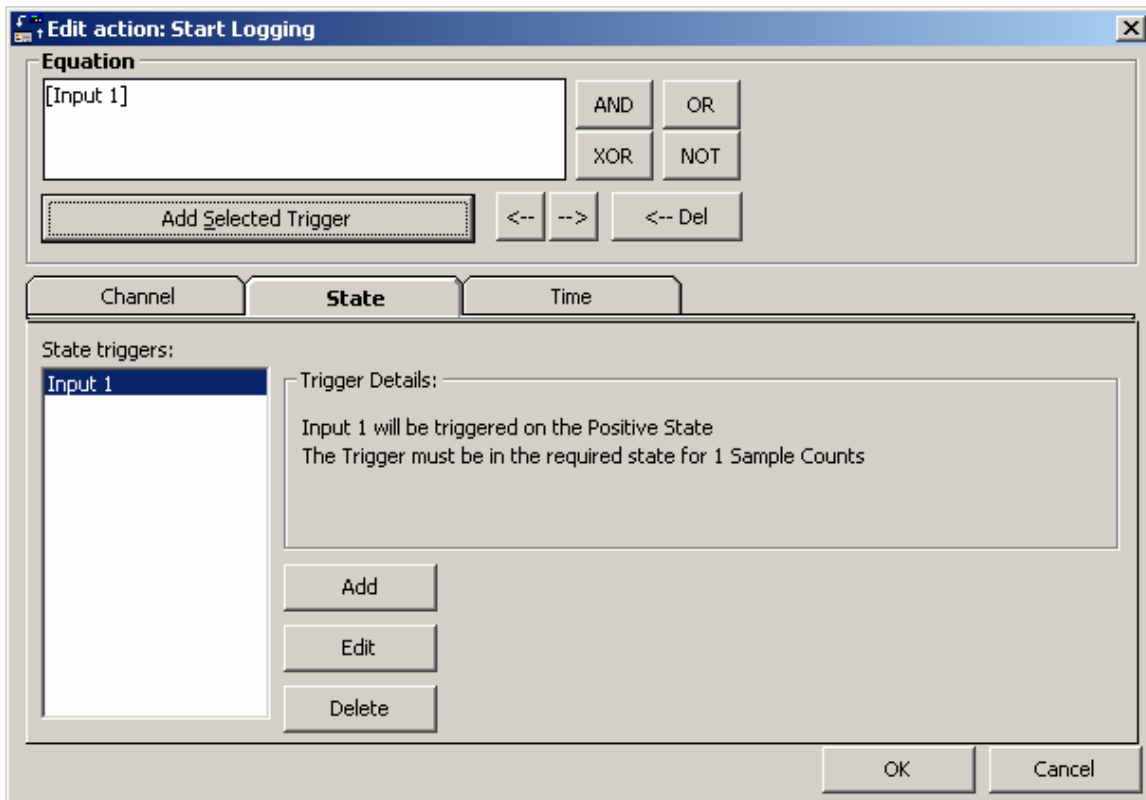
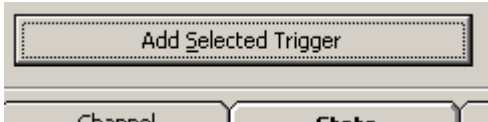


Then click on the *Add* button.

# DATA ACQUISITION

## Hints and Tips

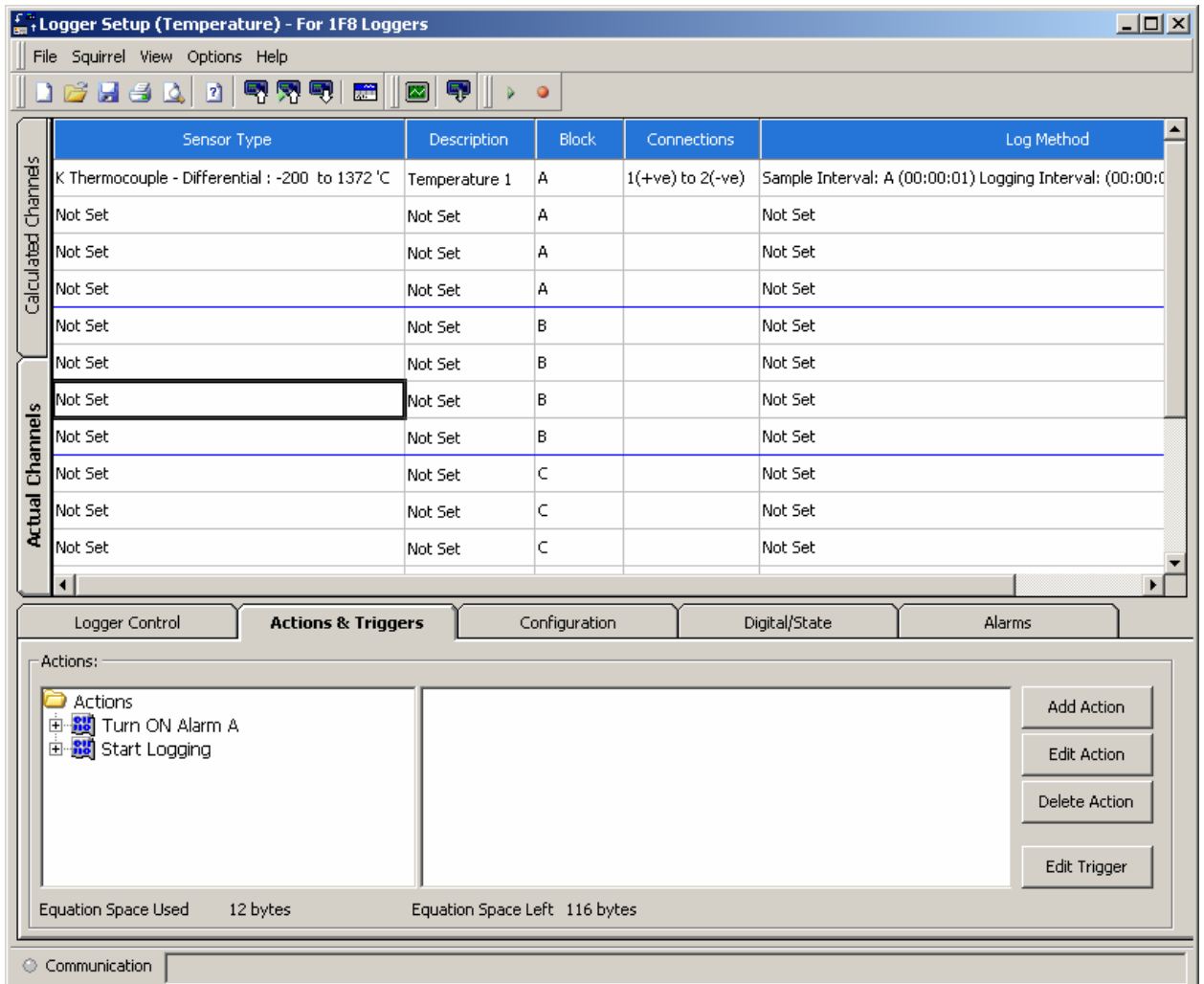
To add the action, click on the *Add Selected Trigger* button.



Click on the *OK* button.

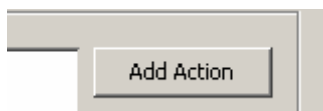
# DATA ACQUISITION

## Hints and Tips



Now you need to add the stop logging action.

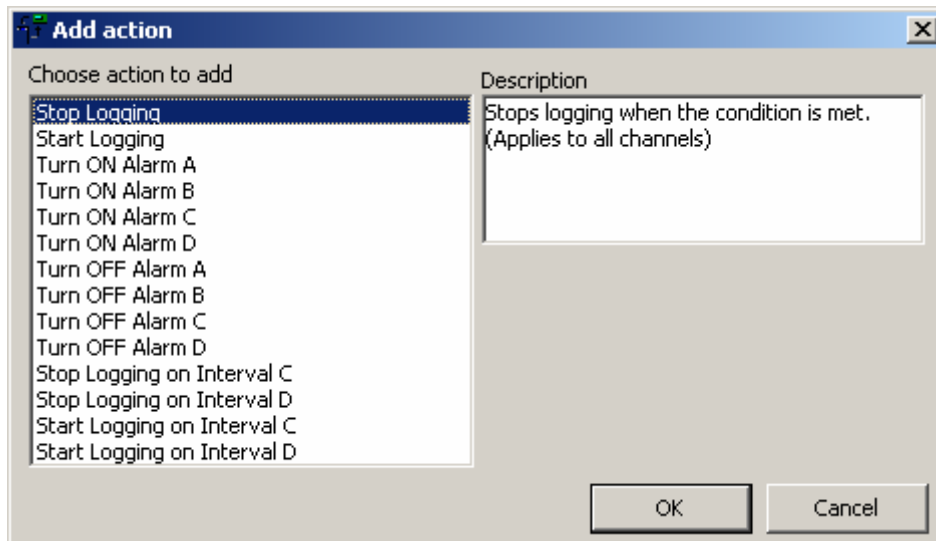
Click on the *Add Action* button.



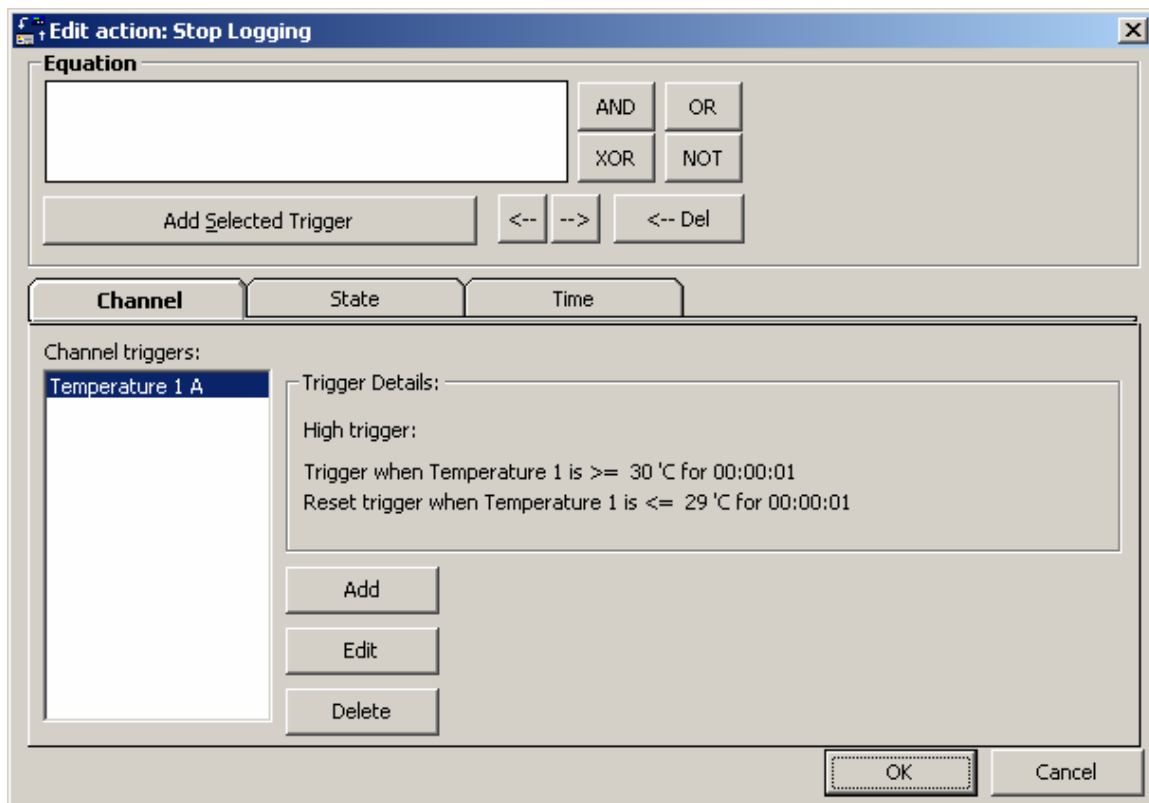
# DATA ACQUISITION

## Hints and Tips

Select the Stop Logging action.



Click on the **OK** button.



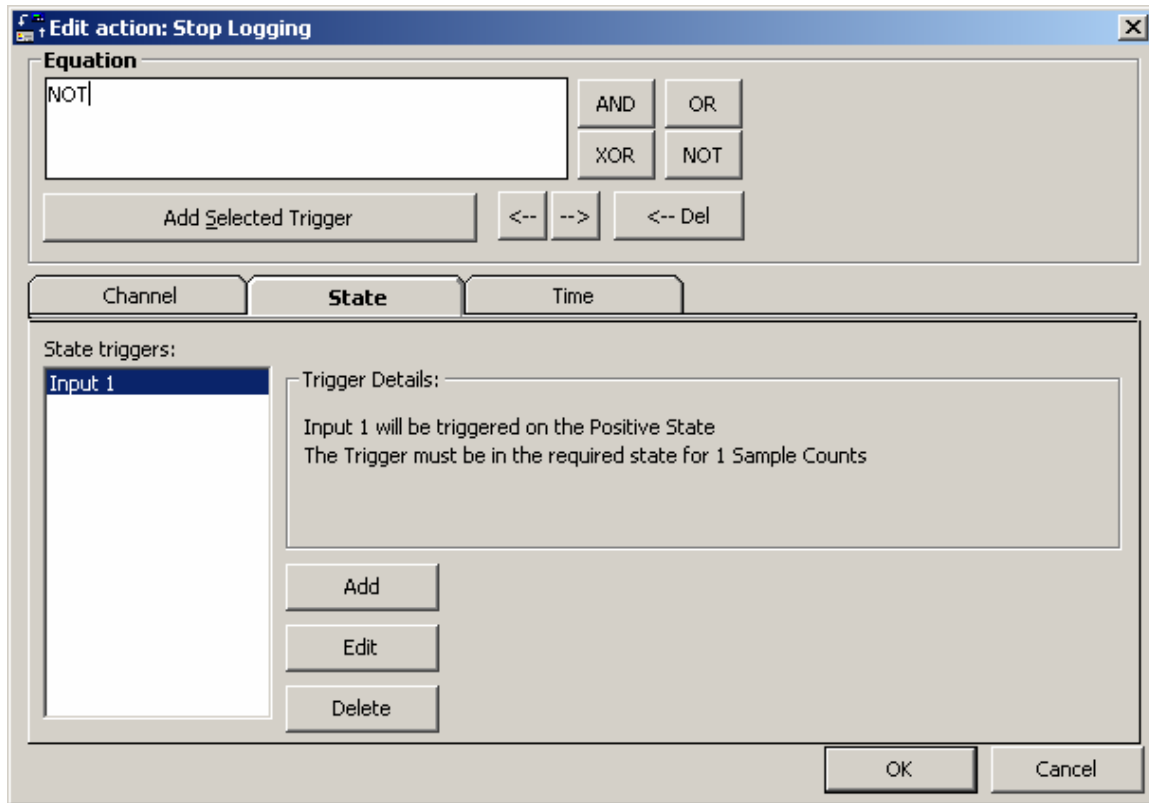
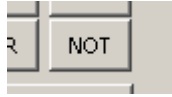
Select the **State** tab.



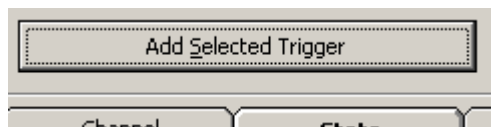
# DATA ACQUISITION

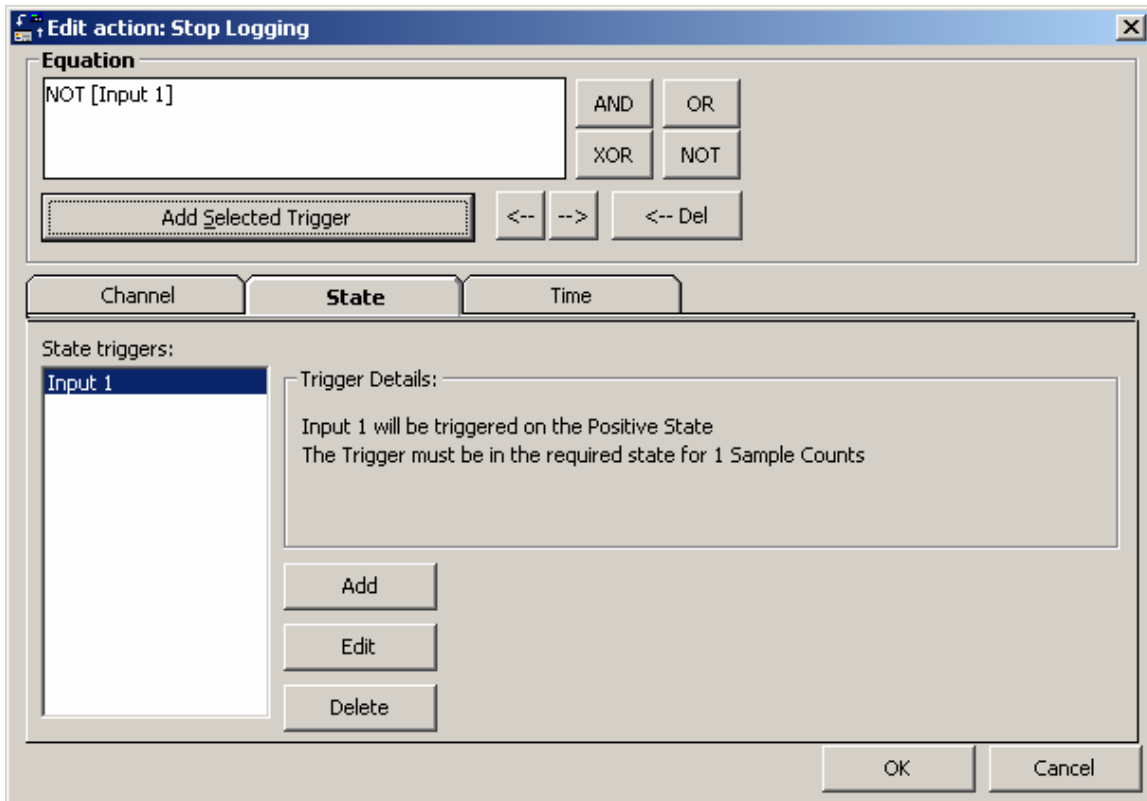
## Hints and Tips

And click on the *NOT* button.

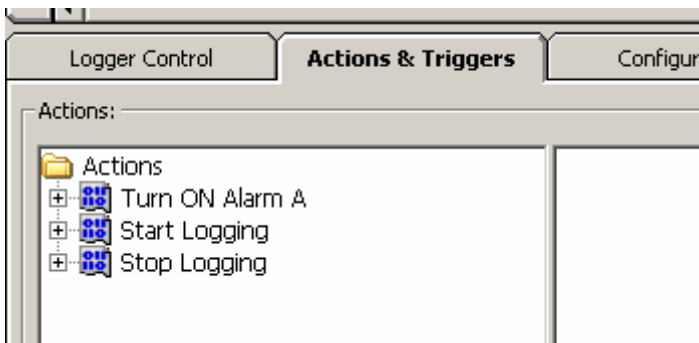


Click on the *Add Selected Trigger* button.

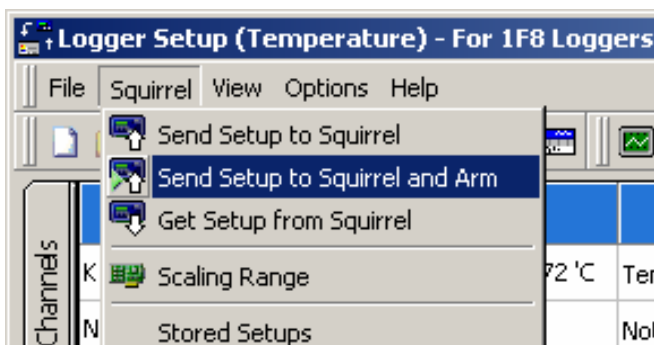




The logger will stop logging when the event is not activated  
Click on the **OK** button.



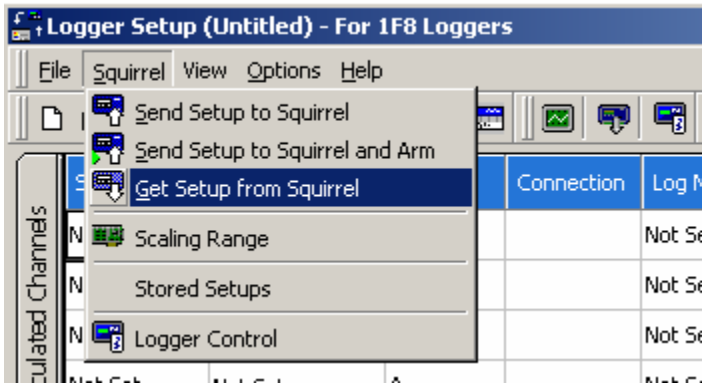
Save the Set-up  
Then send the setup the logger and start logging.



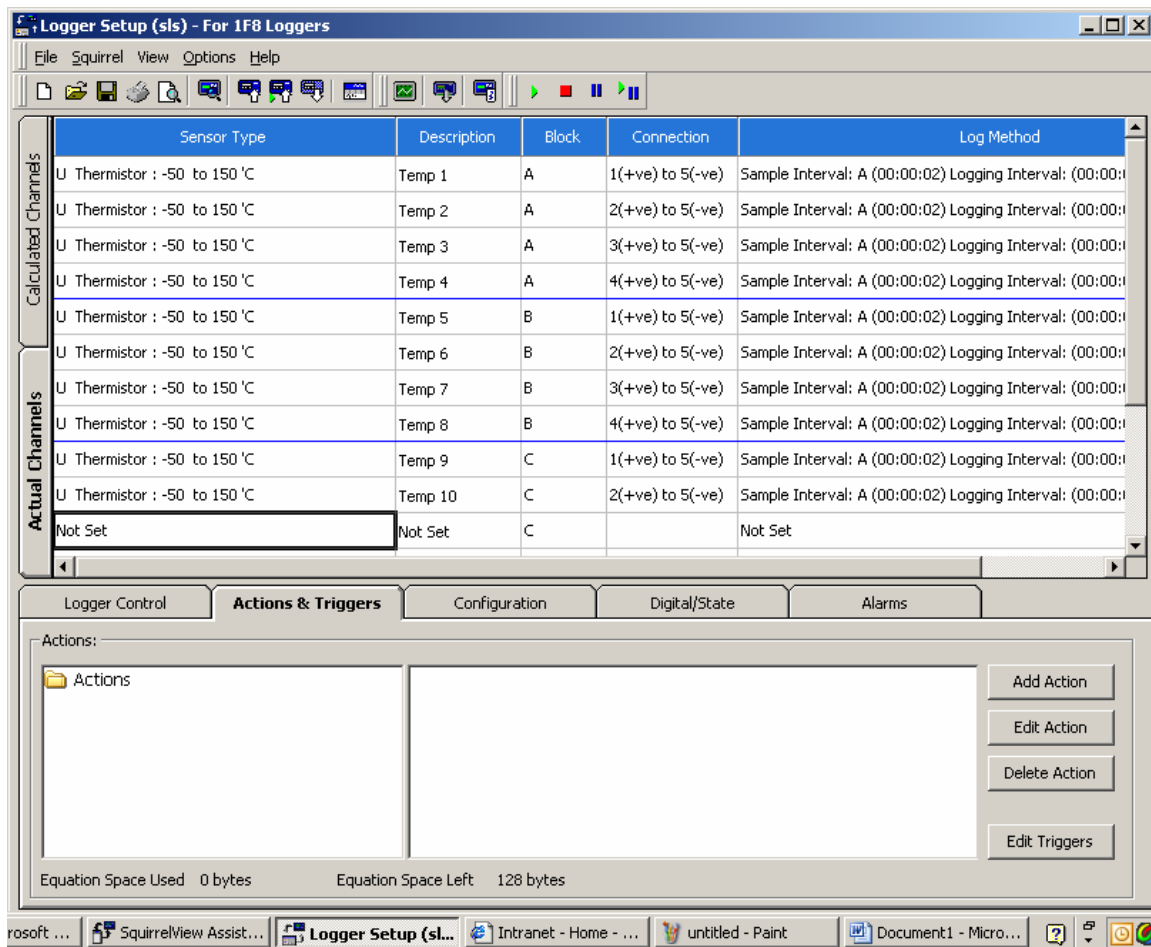


### Setting an Alarm Action

In Logger Setup Screen Get Setup from Squirrel



Click on Actions & Triggers tab



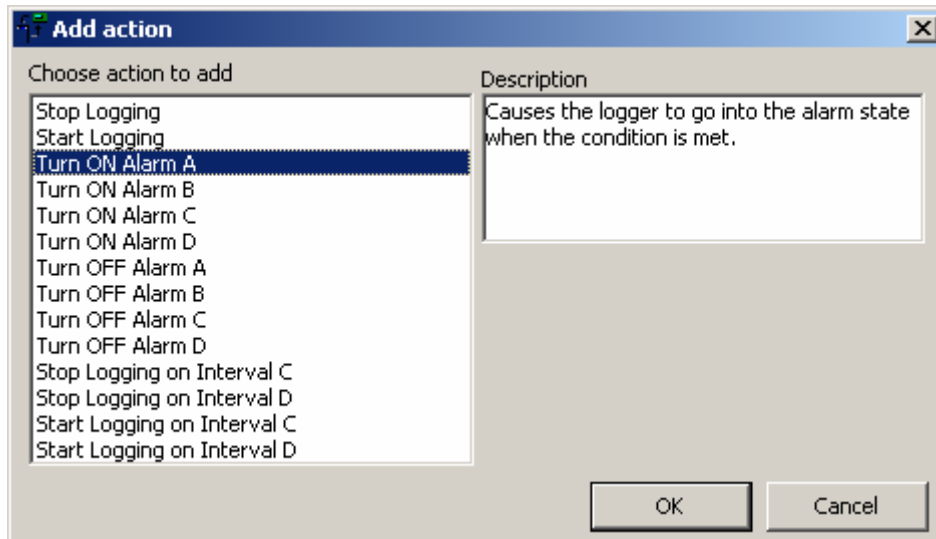
# DATA ACQUISITION

## Hints and Tips

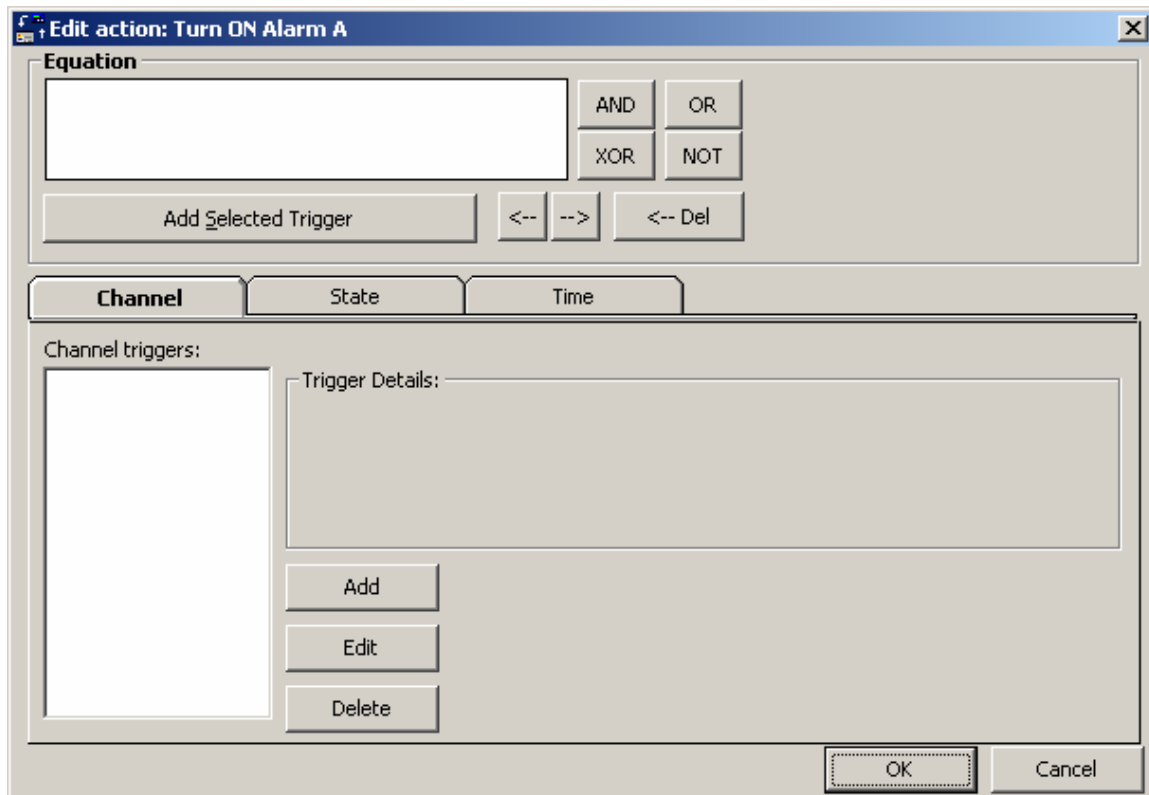
Click on the *Add Action* Button



Select an alarm to turn on and Click on the *OK* button



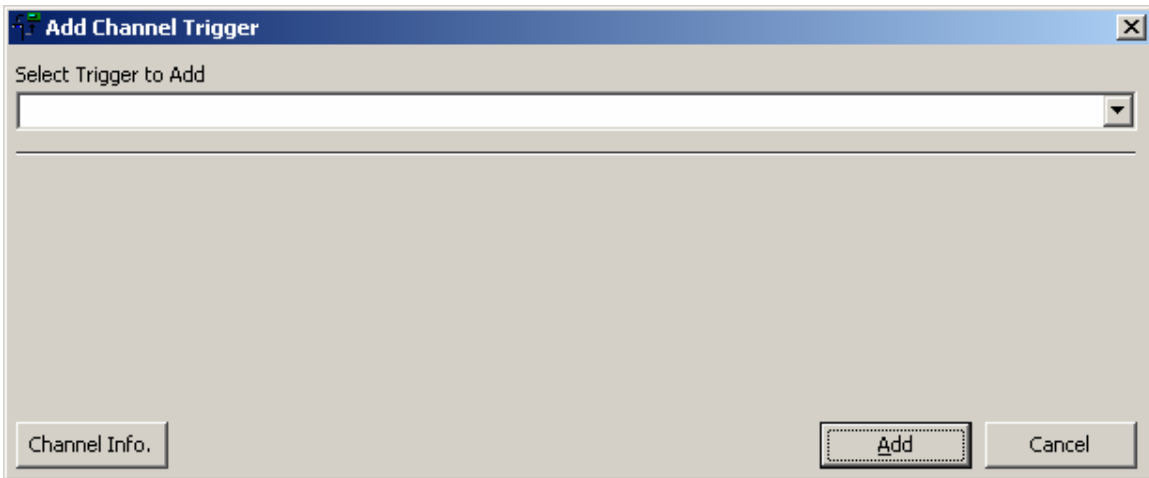
Click on the *Add* button



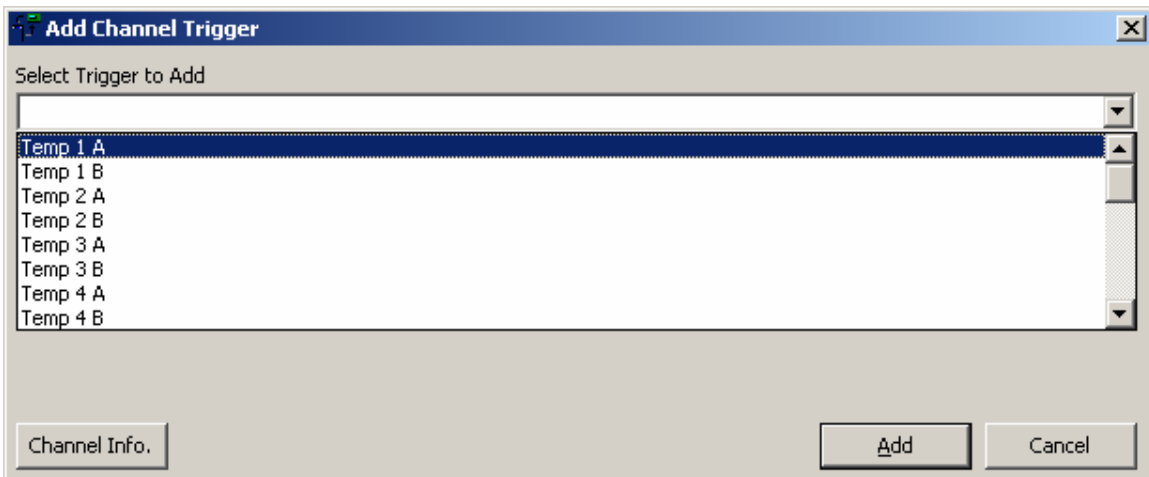
# DATA ACQUISITION

## Hints and Tips

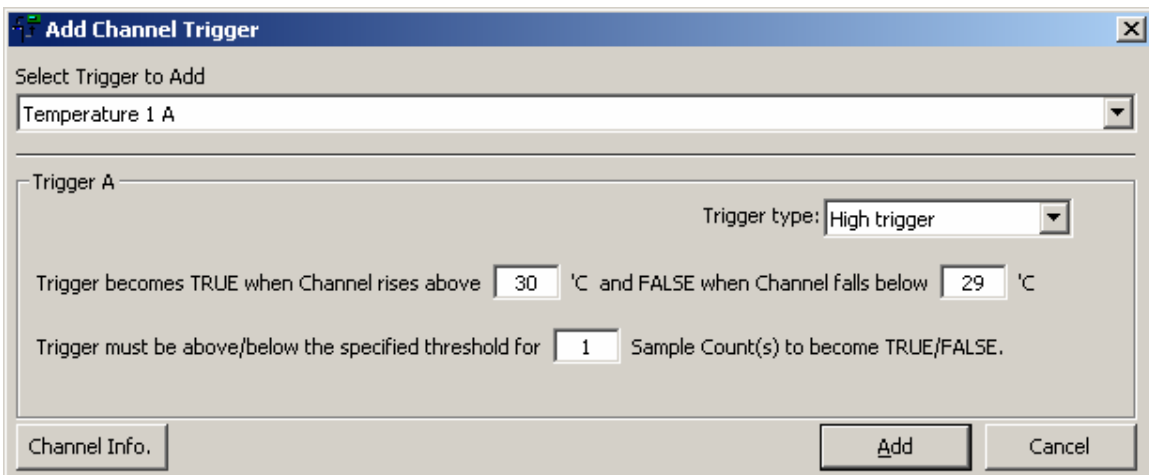
Enter the drop down box



Choose the trigger channel you want the alarm to apply too.



Choose the Trigger Type and enter the values required for the alarm



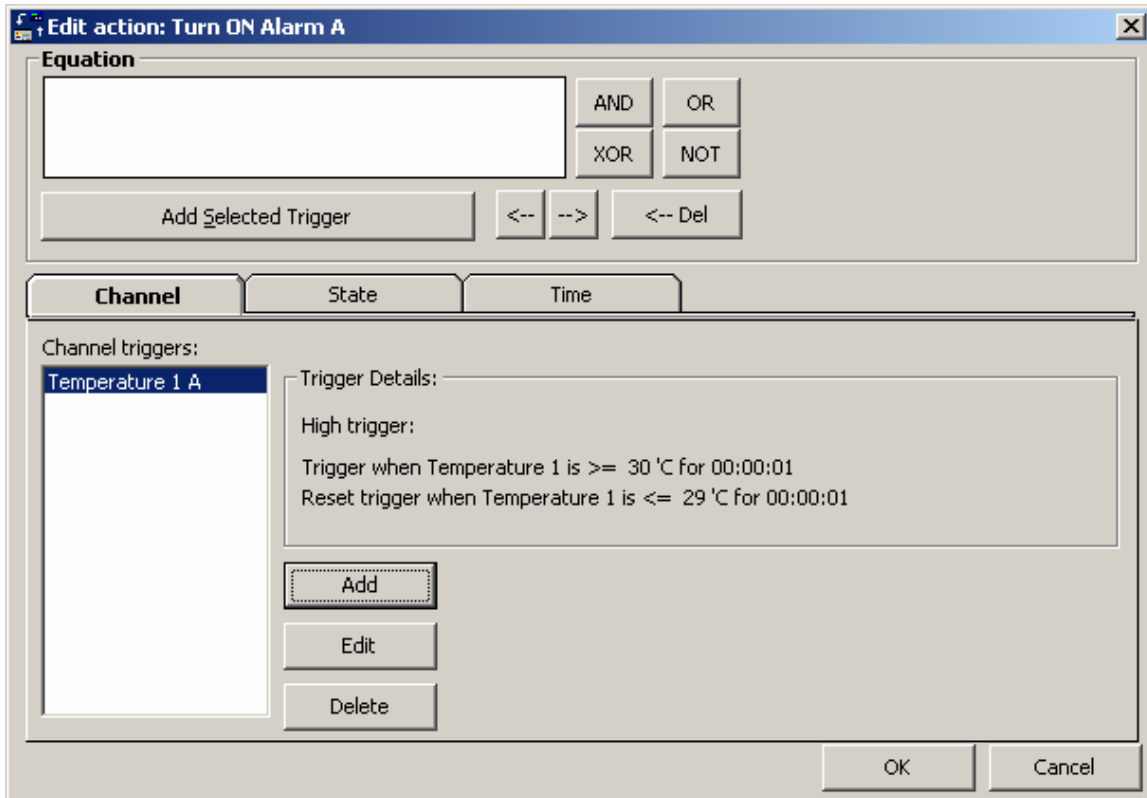
# DATA ACQUISITION

## Hints and Tips

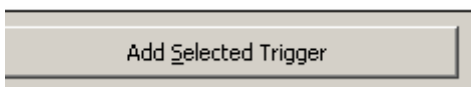
Click on the *Add* button

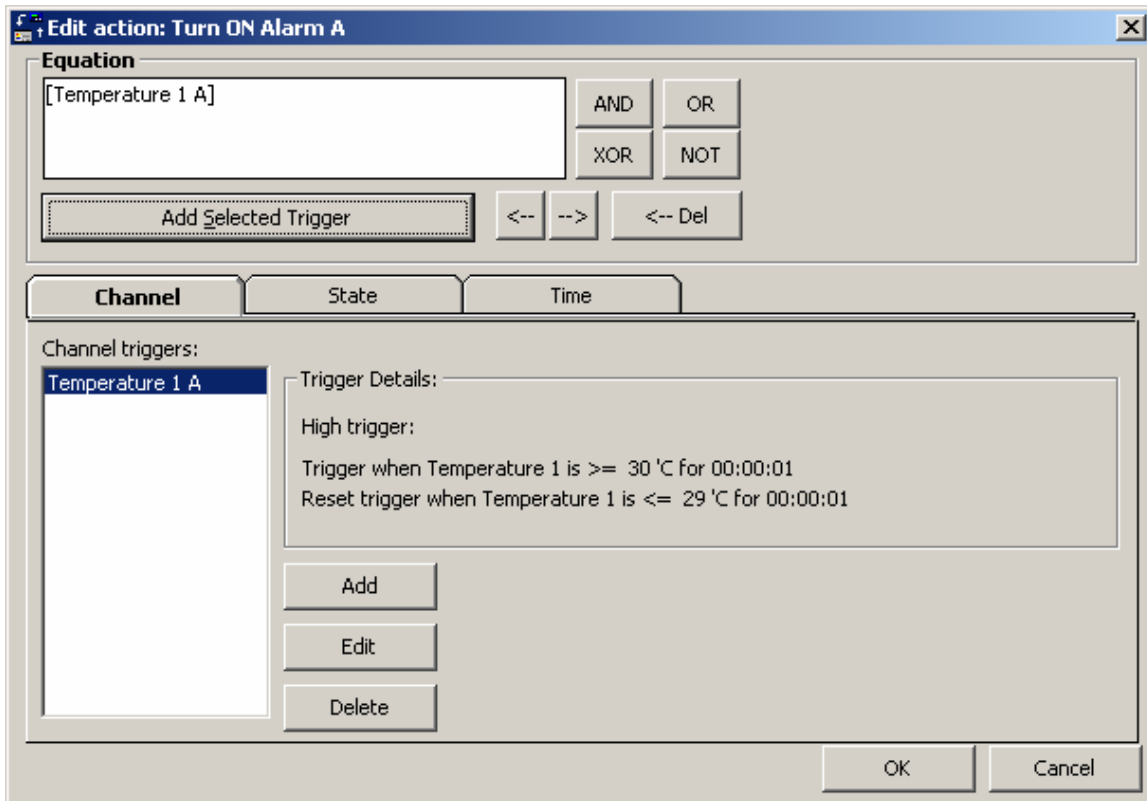


Highlight the Channel trigger to be added to the equation



Click on the *Add Selected Trigger* button





Click on the **OK** button

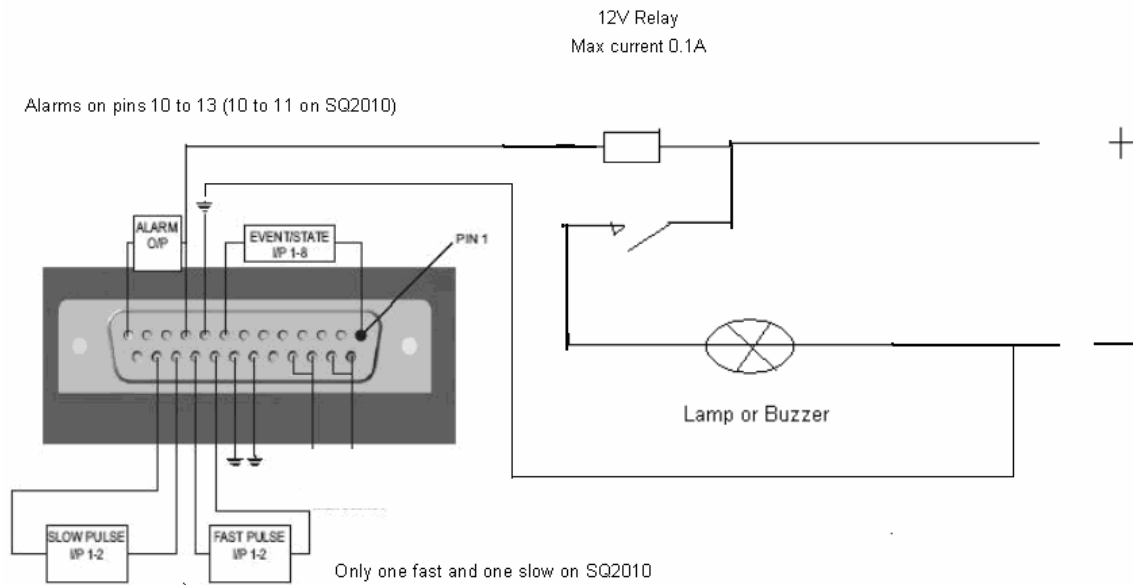


Action will appear as below in the Logger Setup window.



[Return To Index](#)

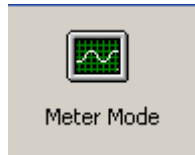
### Sample Alarm Circuit



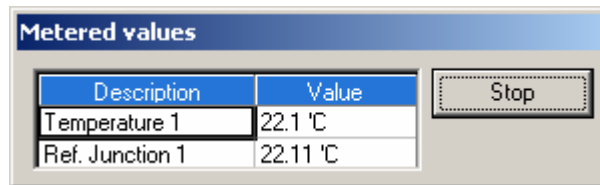
[Return To Index](#)

### Meter Mode

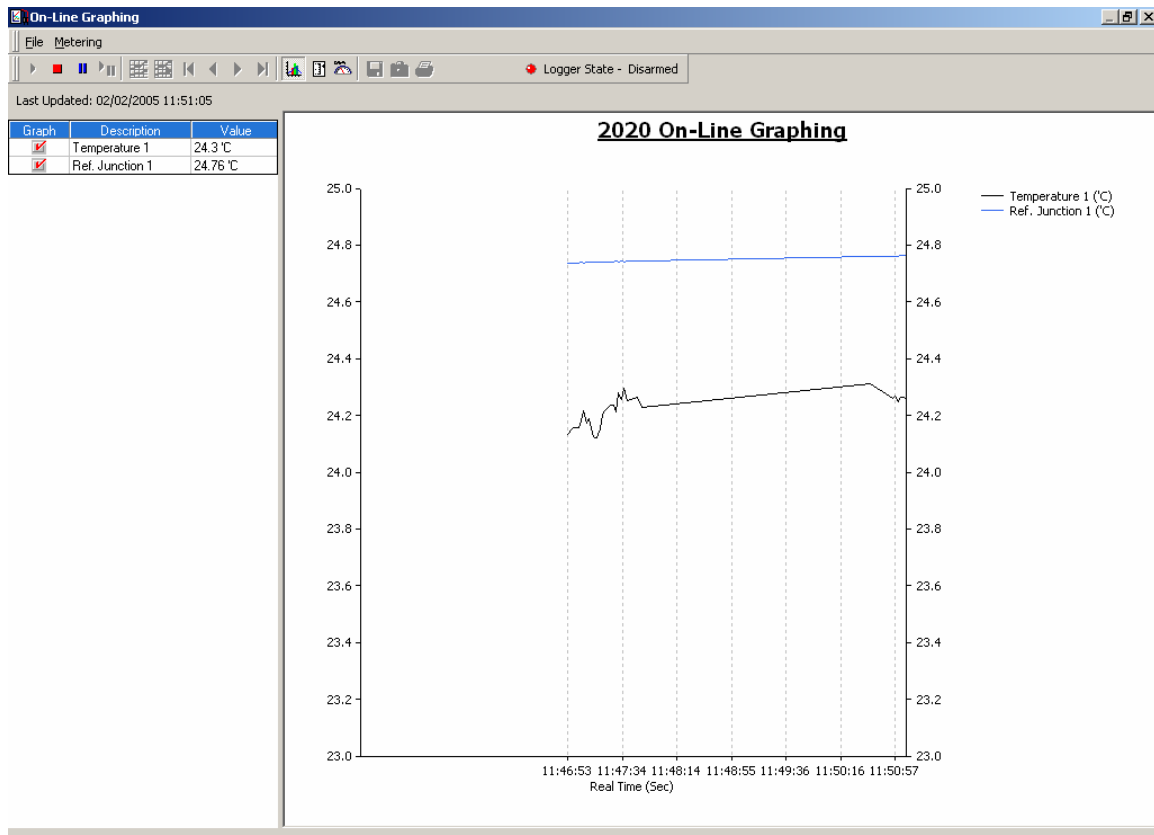
Once the channels have been set and the set file sent to the logger, click on the *Meter Mode* button on the front screen of the SquirrelView Assistant.



The Basic SquirrelView will display readings from the logger at approximately 1 Hz from all the channels that have been setup.



To see Online graphing, SquirrelView Plus software is required

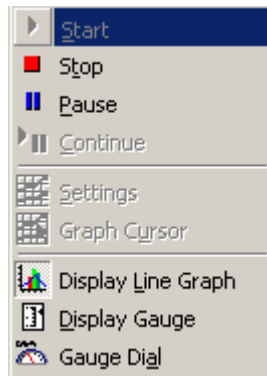


The graph is displayed with automatic scaling.

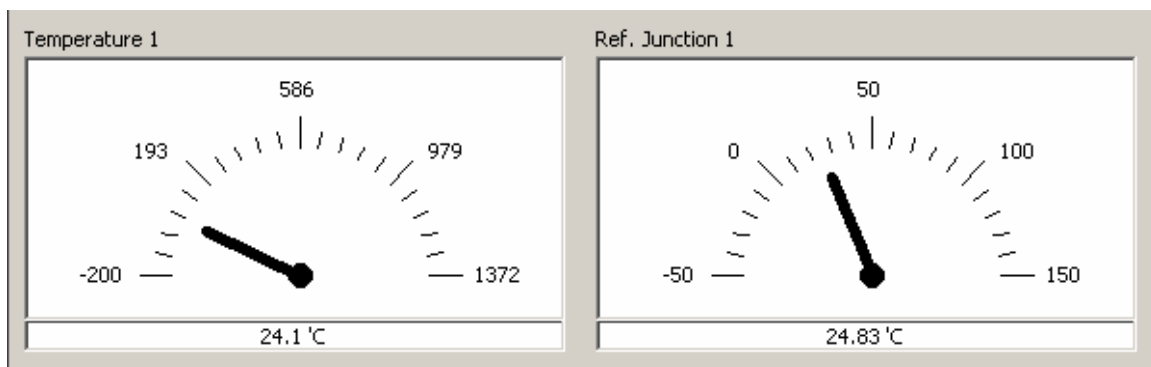
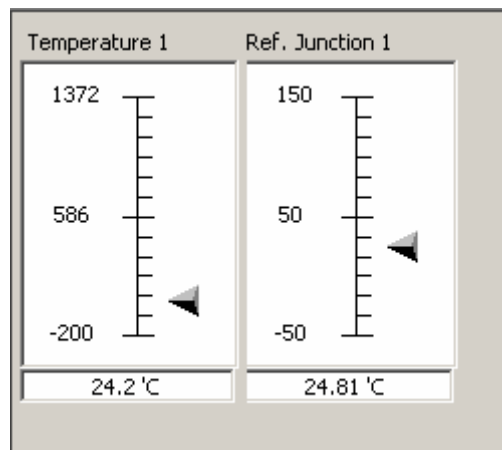
# DATA ACQUISITION

## Hints and Tips

Right click on the graph to change display type



As well as a line graph a display gauge and a Dial gauge can be chosen.

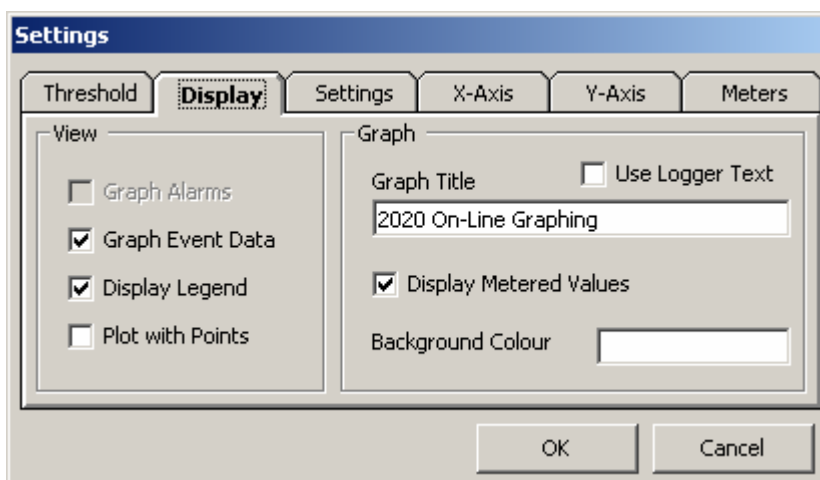
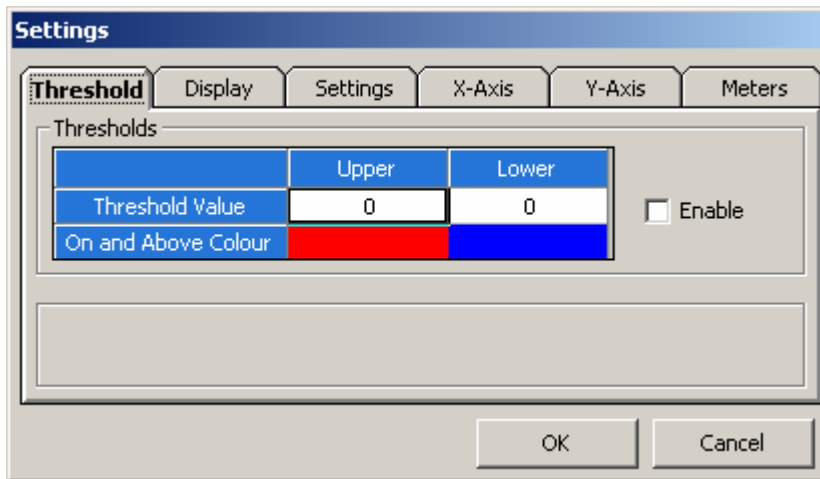
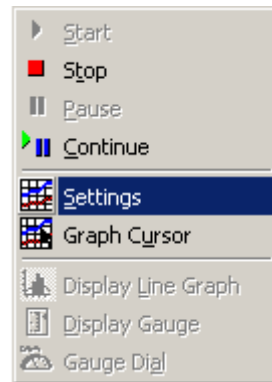
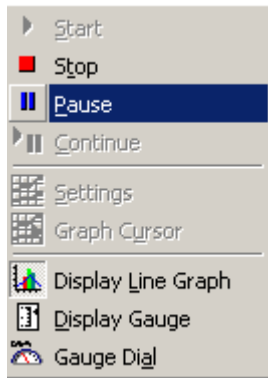




# DATA ACQUISITION

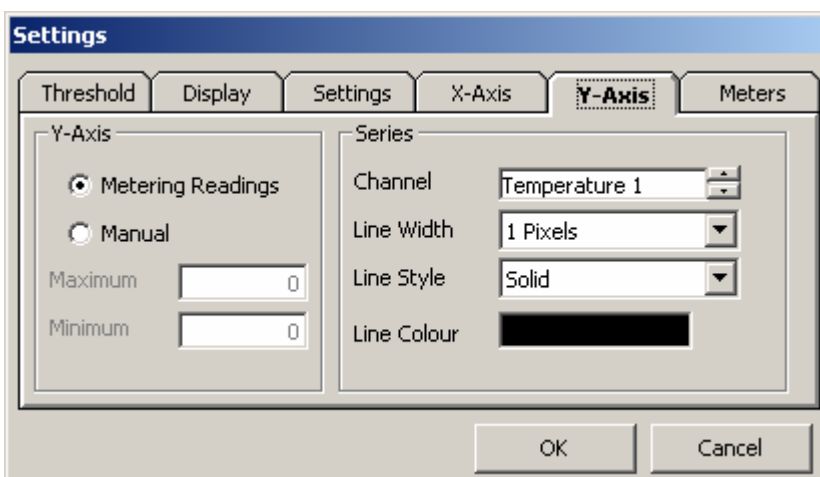
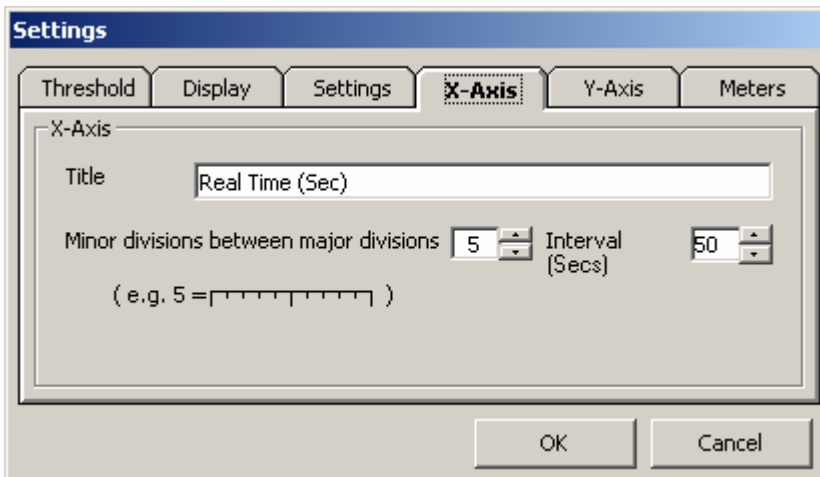
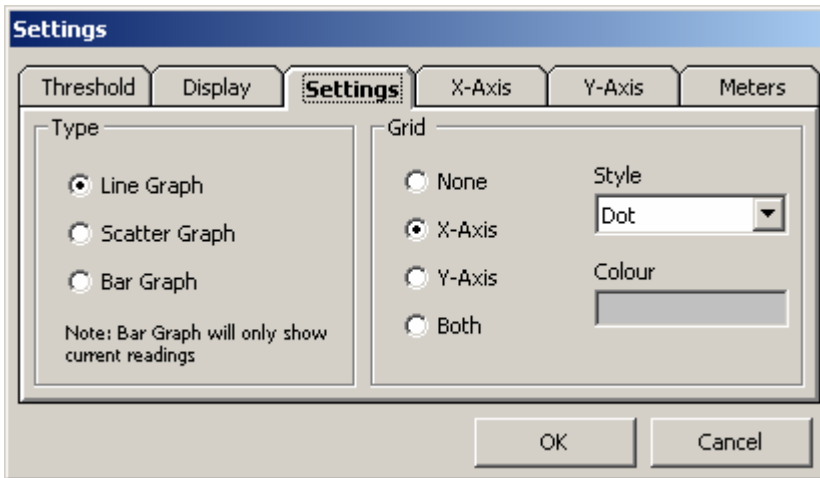
## Hints and Tips

Pause to change settings



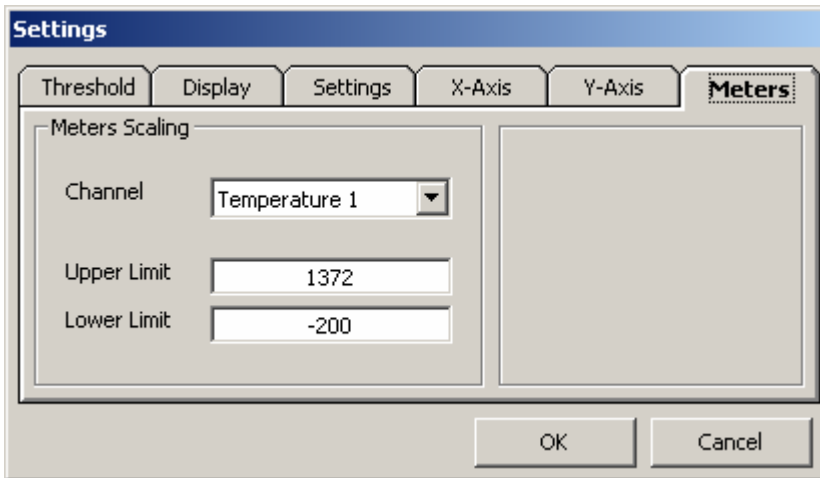
# DATA ACQUISITION

## Hints and Tips



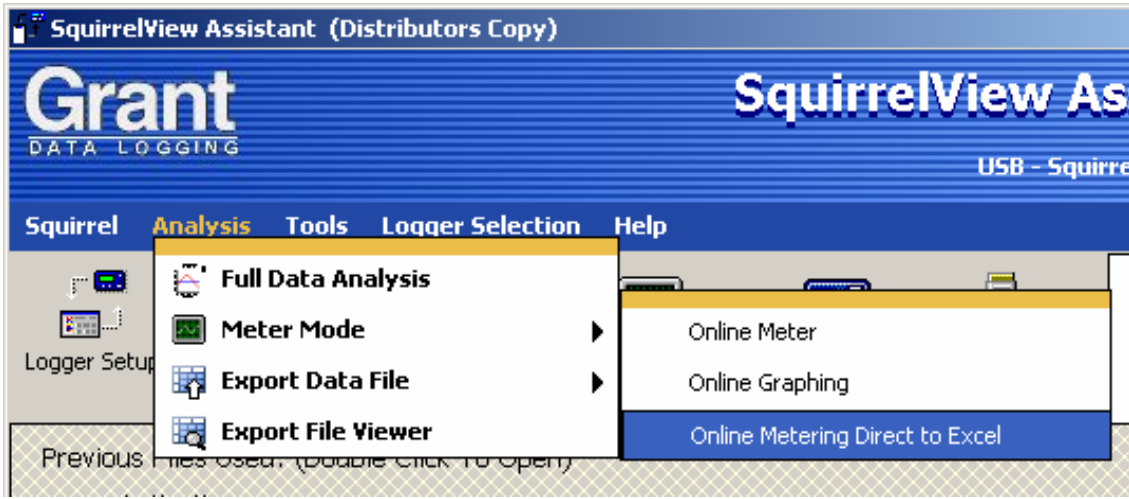
# DATA ACQUISITION

## Hints and Tips



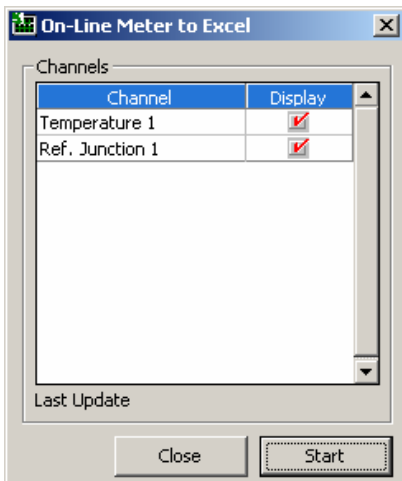
[Return To Index](#)

### Online Metering Direct to Excel



This metering function collects data values from selected setup channels in the logger, and places them into an Excel spreadsheet.

When this feature is activated the SquirrelView Assistant window will disappear and the below screen displayed.

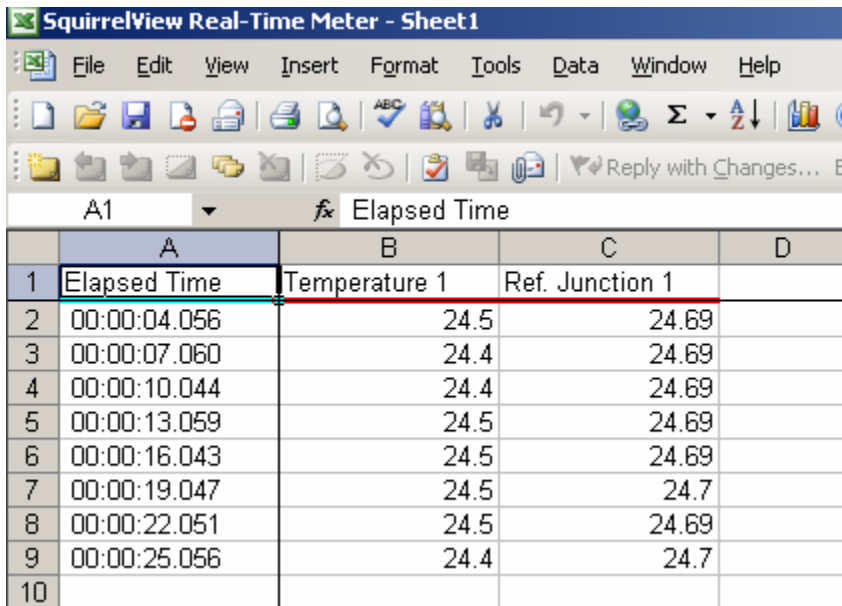


Select the required channels and click the *Start* button, If you need to change which channels are being metered you will have to restart the metering process.

An Excel application spreadsheet will then be automatically created, configured with the channels select metering to this spreadsheet.

# DATA ACQUISITION

## Hints and Tips



The screenshot shows the SquirrelView Real-Time Meter software interface. The spreadsheet displays the following data:

	A	B	C	D
1	Elapsed Time	Temperature 1	Ref. Junction 1	
2	00:00:04.056	24.5	24.69	
3	00:00:07.060	24.4	24.69	
4	00:00:10.044	24.4	24.69	
5	00:00:13.059	24.5	24.69	
6	00:00:16.043	24.5	24.69	
7	00:00:19.047	24.5	24.7	
8	00:00:22.051	24.5	24.69	
9	00:00:25.056	24.4	24.7	
10				

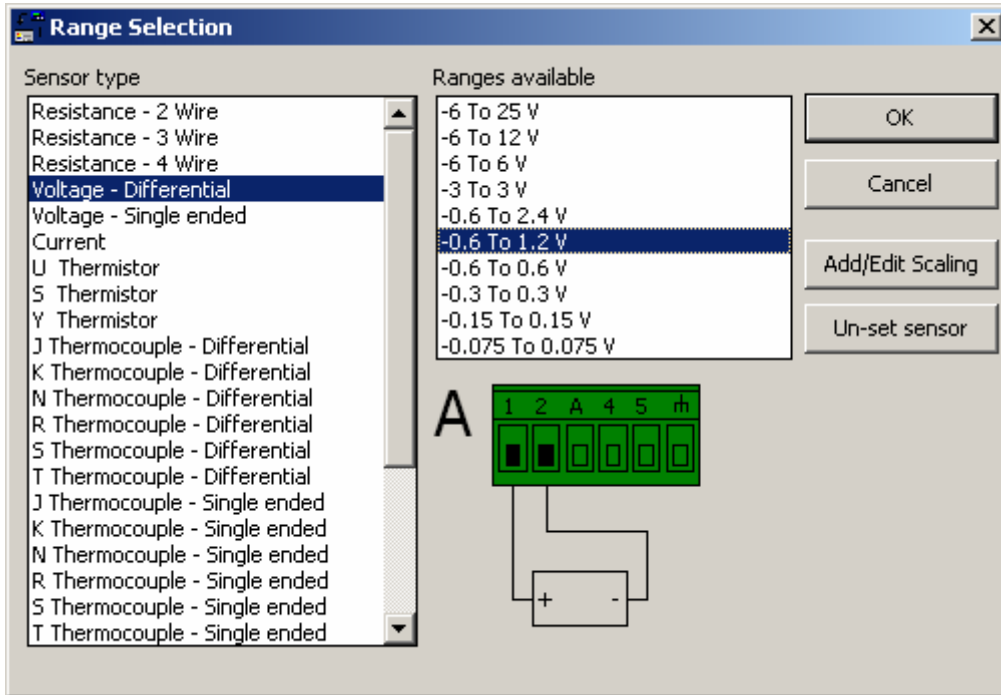
**Note:** It is requested not to edit or change any of the spreadsheets settings until metering has stopped and exited. Any modification to the spreadsheet whilst metering could lead to corruption of the data.

[Return To Index](#)

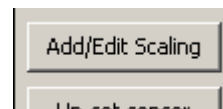
### Engineering Units

To setup engineering units the following example shows a voltage input of 0 to 1 V which is equal to 0 to 100% rh

Select appropriate input and range in this case.



Click on the *Add/Edit Scaling* button.

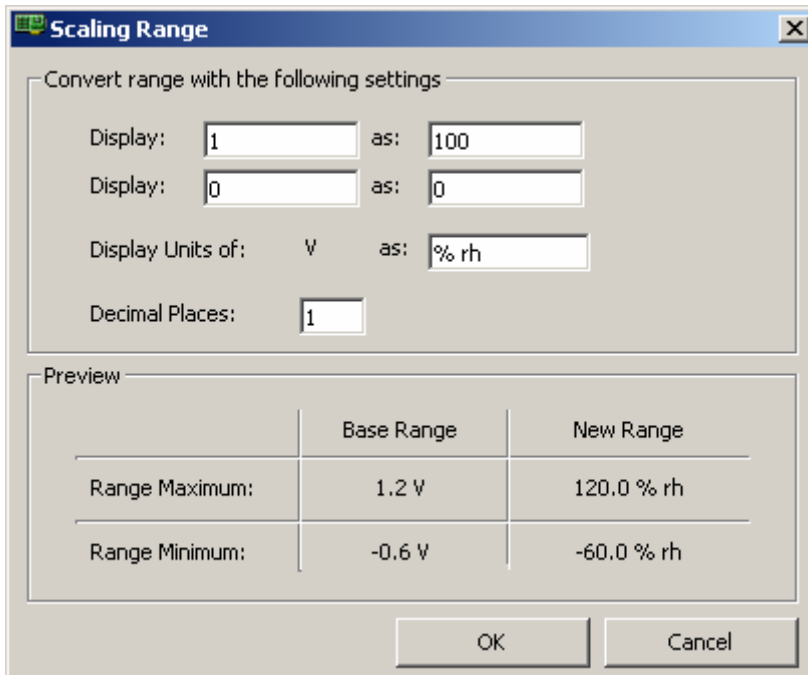


# DATA ACQUISITION

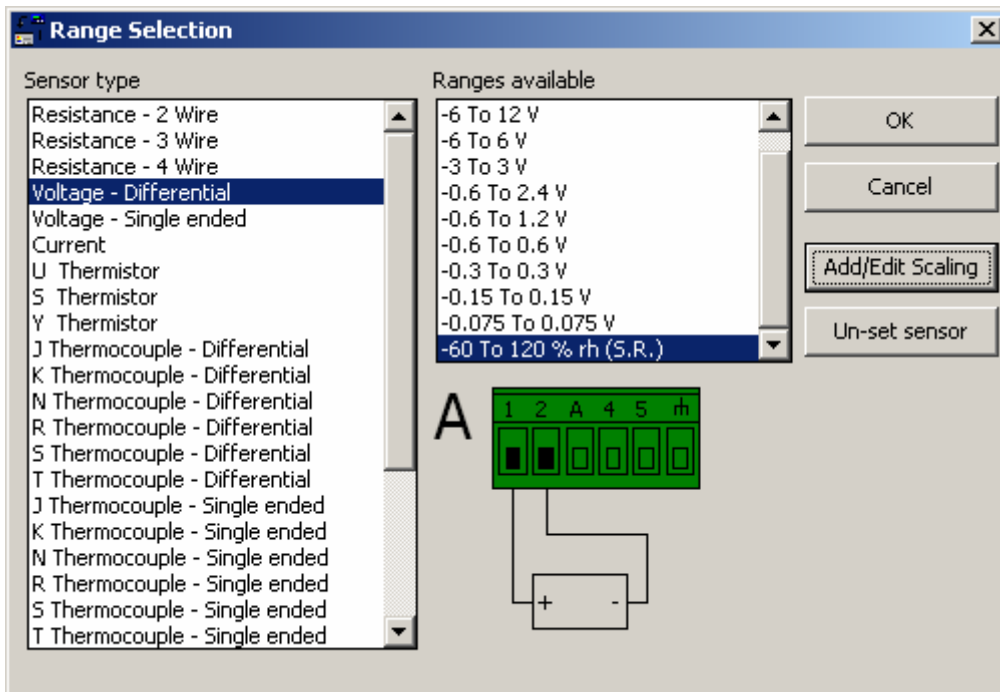
## Hints and Tips

Set display 1 as: 100 and 0 as: 0  
Units as %rh  
Realistic number of decimal places

The logger will scale the whole range which is shown below



Click on the *OK* button.

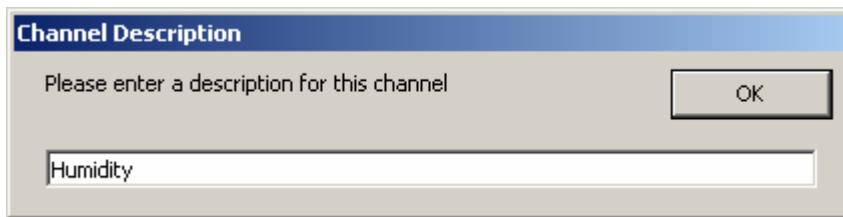


Select scaled range (SR) and click on the *OK* button.

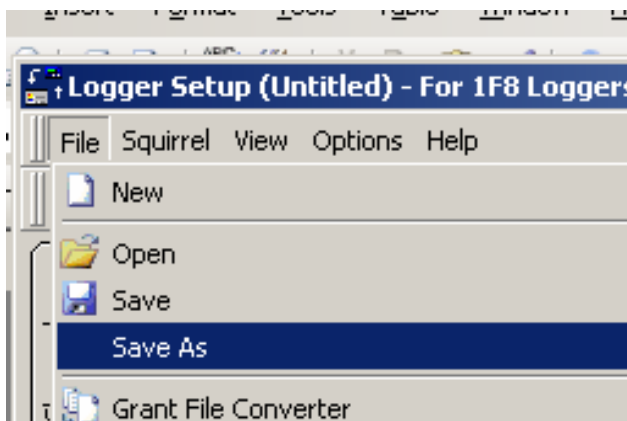
# DATA ACQUISITION

## Hints and Tips

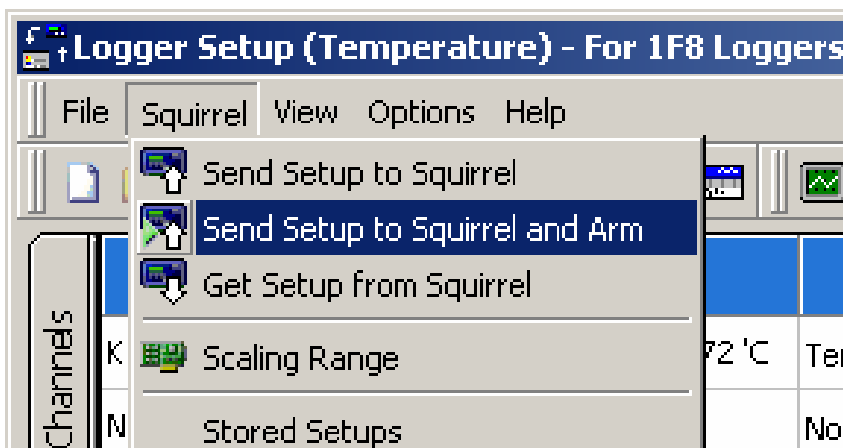
Enter a description for the channel.



Save the setup



Send the setup to logger and Arm if required

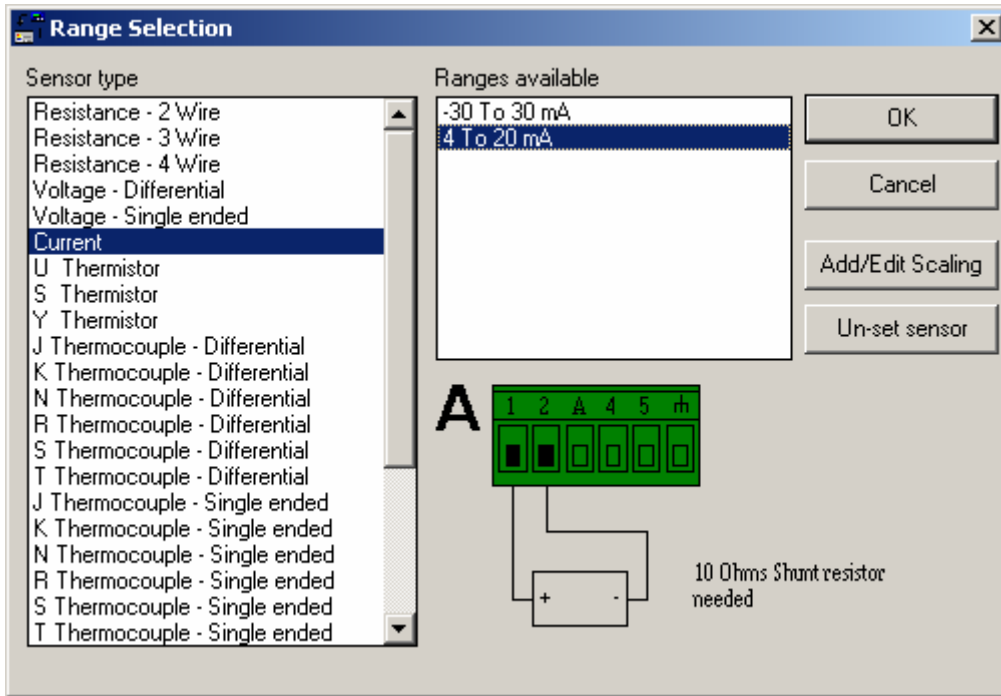


[Return To Index](#)

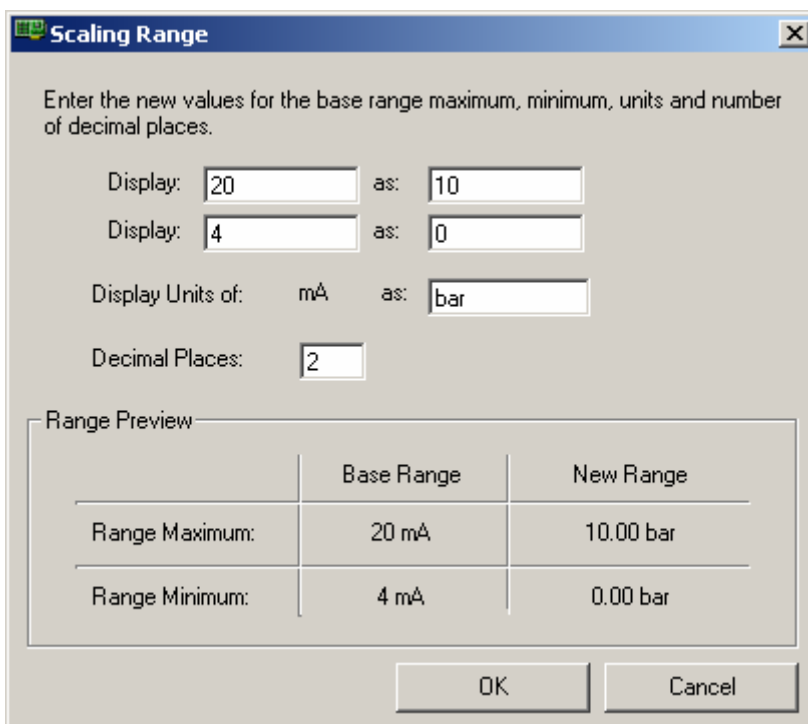


### 4 to 20 mA Connections

In logger Setup screen double click in Sensor Type column of input channel required (Block A is shown) but can be A, B, C or D input block. Select the range as below then click on the *OK* button.

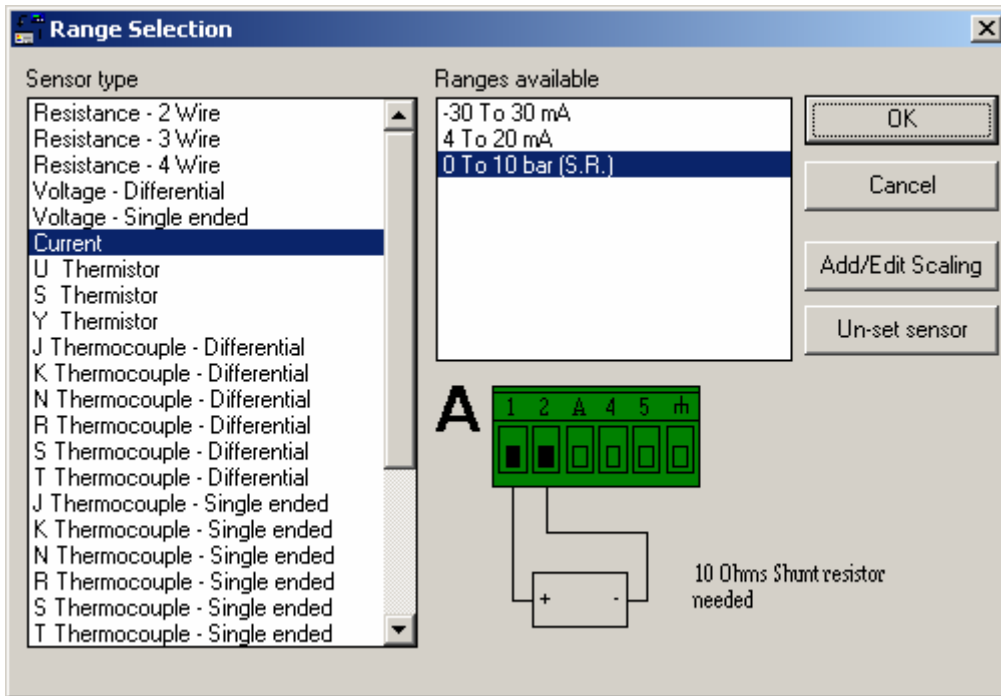


If engineering units are required click on *Add/Edit Scaling* button  
The example below shows input scaled to log as 0 to 10 bar pressure

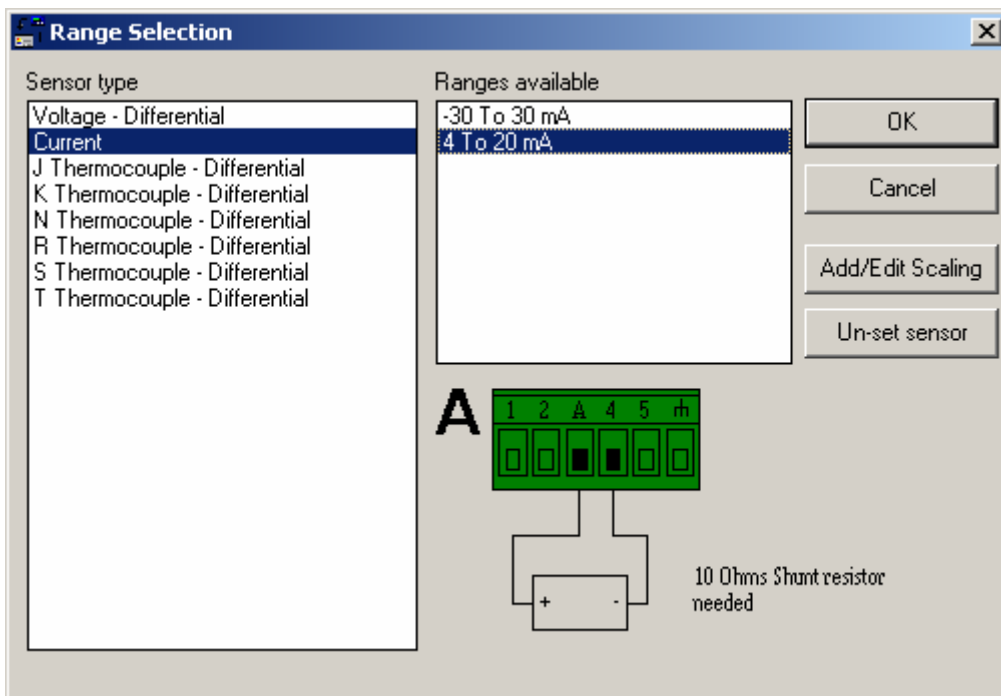


# DATA ACQUISITION

## Hints and Tips



For next sensor (Up to two sensors can be connected to each block)  
 Double click in next valid channel sensor type column select range as below add scaling  
 if required then click on the *OK* button.



If more sensors are required, repeat above procedure with next channel on the next  
 input block

Save and send set up to logger

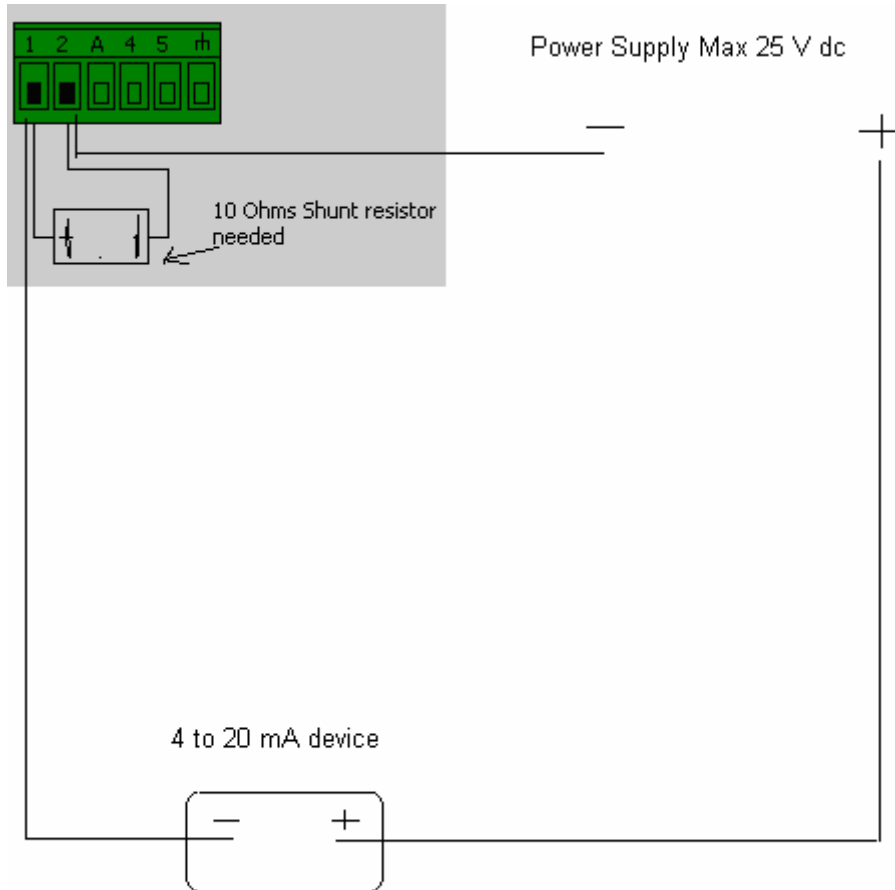
# DATA ACQUISITION

## Hints and Tips

### Connect sensor wires as follows

Check colour code for sensors selected to ensure that probes are connected to correct polarity

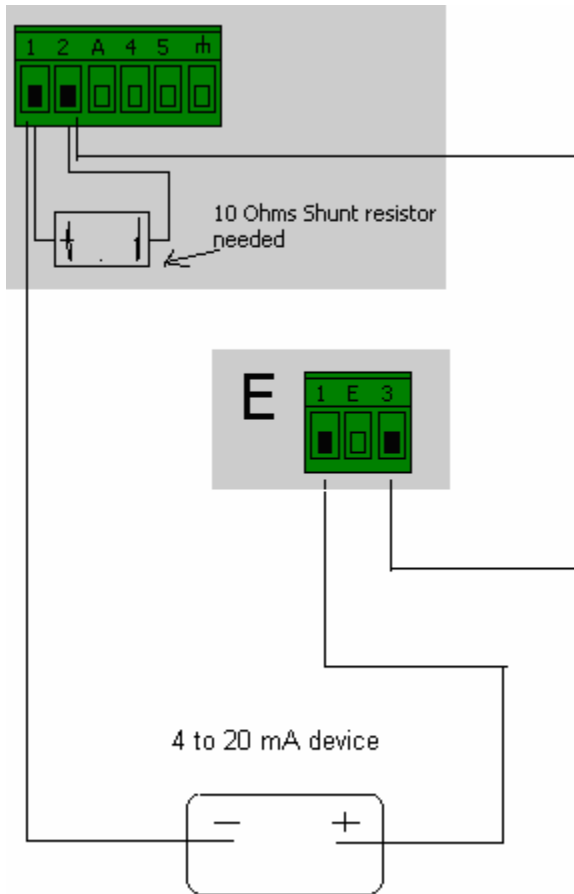
Connect probes with precision 10 Ohm resistor (pack of four grant part CS202 supplied with logger) across terminals as shown below



Sensors can be powered via the SQ2020/SQ2040 data logger if required maximum supply voltage is 18Vdc (supply volts) & total maximum current is 100mA.

# DATA ACQUISITION

## Hints and Tips



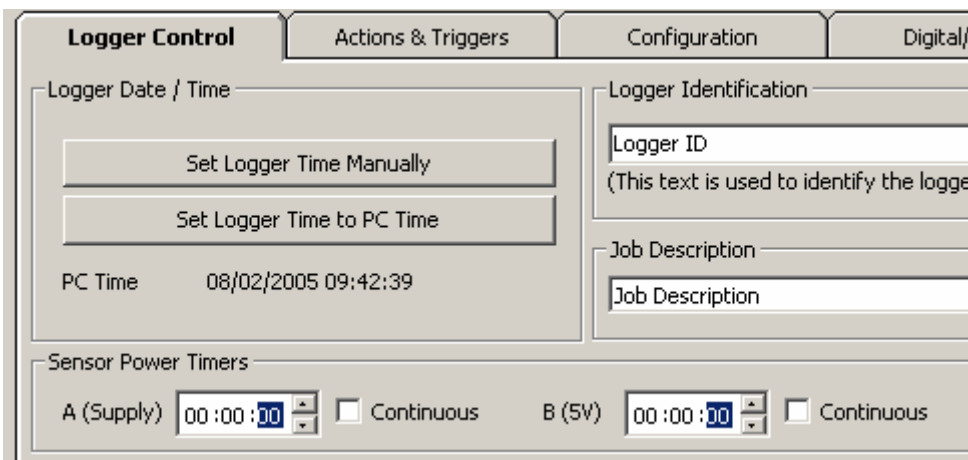
[Return To Index](#)

### Sensor Power Supply

The choice of power is

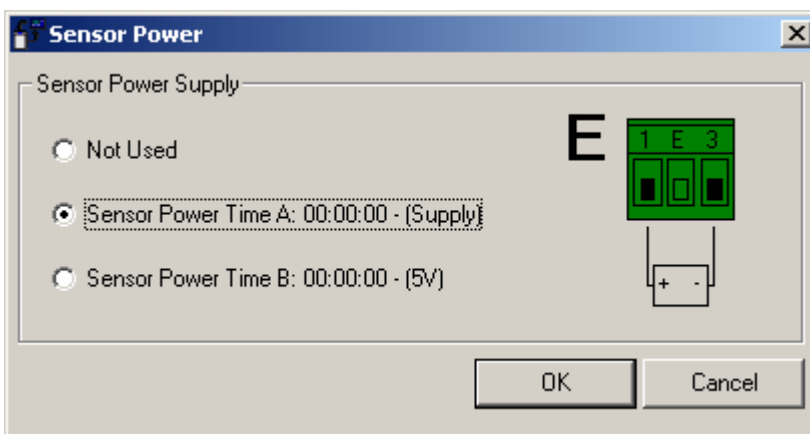
- A - External Supply (as supplied into the DC power plug, 100mA max)
- B - 5V (regulated output from logger, 50mA max)

Each supply can be set to turn on either continuously whilst the logger is Armed or at the required duration before a sensor is sampled (Sensor warm up time)



To activate Sensor Power Supply double click on “Not Used” in Sensor Power column of the input channel and select the one power supply required

Connection	Log Method	Log	Sensor Power
1(+ve) to 2(-ve)	Sample Interval: A (00:00:01) Logging Interval: (00:00:01) Mode: Interval	<input checked="" type="checkbox"/>	Not Used



[Return To Index](#)