

Squirrel 610 TEMPERATURE LOGGER

Building on over 40 years experience in temperature monitoring, the Grant Squirrel OQ610 Logger is easy to use, more affordable, and offers greater flexibility for measuring temperature. The OQ610 can start recording or print results at the touch of a button, and with SquirrelView software can be configured to your precise requirements.

Free
Software
&
Technical
Helpline

Key Features

- 6 channel temperature logger for use with a wide range of K or T type thermocouple probes offers greater flexibility and a quick response
- Battery operated and easily portable
- Simple 3 button operation via built in display or from PC
- Can be configured to automatically start and stop logging on time or temperature levels
- Fast sample rates for fast process times; up to 8 samples/second and, if required, can provide automatic cure calculation in through process applications
- Non-volatile memory provides up to 260,000 readings of secure data
- Time and date reported with each reading
- USB communication port

built-in
display and
keypad for
ease of use

small,
compact &
robust steel
case



6 "auto detect"
thermocouple inputs
make setup easy

USB port for direct
connection to an A4
portable or desktop
printer for immediate
results with no need
to connect to a PC

Benefits

Flexibility in temperature monitoring:

Suitable for a wide range of temperature recording applications in industry, research & development.

Simple to use:

Power up the logger, connect your thermocouples and conduct your tests. The logger automatically detects when sensors are present making setup easy.

Small in size:

The OQ610 is small and compact, making it suitable for use in a variety of applications, thus offering complete flexibility.

Simple record keeping:

With the touch of a button, the OQ610 can directly print user-configurable, concise reports to simplify record keeping and provide ISO 9000 quality records. USB communications enables direct printout without the need to connect to a PC.

Software

SquirrelView:

Easy to use setup and
download software

SquirrelView Plus:

SquirrelView with on-line
and historical graphing

Squirrel 610 TEMPERATURE LOGGER

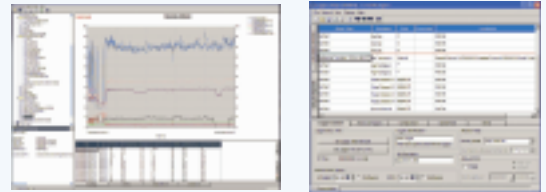


System Specification

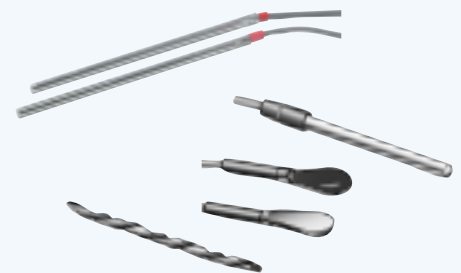
<p>ACCURACY -50 to 500°C, ±0.5°C (-58°F to 932°F, ±0.9°F) -200 to 1300°C, ±1.0°C (-328 to 2372°F, ± 1.8°F)</p> <p>RESOLUTION 0.1°C (0.18°F)</p> <p>SAMPLING RATE Fastest: eight times per second per channel Slowest: once every two hours per channel</p> <p>CHANNELS 6 K or T type thermocouple</p> <p>TEMPERATURE MEASURING RANGE -200°C to 1300°C (-328 to 2372°F) (K type) -200°C to 400°C (-328 to 752°F) (T type)</p> <p>OPERATING ENVIRONMENT Temperature range -30 to 65°C Humidity 95%</p>	<p>MEMORY Flash memory of 260,000 readings</p> <p>MAXIMUM RUNS STORED 8</p> <p>COMMUNICATION USB 1.1 and 2.0 compatible</p> <p>DISPLAY Alphanumeric display of 2 x 16 characters shows cure pass/fail, battery status, probes connected, real time readings and communication to printer or PC</p> <p>POWER SUPPLY Two AA cells to give 200 hours operation at default settings</p> <p>DIMENSIONS AND WEIGHT Dimensions (l x w x h): 148x95x21mm Weight: 450g</p>	<p>DIRECT PRINTING Direct printing of oven profile report Printer driver types: HP Deskjets <i>(for more information, contact our Logger Sales department)</i></p>
--------------------------------------------------------------------------------------------------------------------------------------------------------------------------------------------------------------------------------------------------------------------------------------------------------------------------------------------------------------------------------------------------------------------------------------------------------------------------------------------------------------------------------------------------------------------------------------------------------------	-------------------------------------------------------------------------------------------------------------------------------------------------------------------------------------------------------------------------------------------------------------------------------------------------------------------------------------------------------------------------------------------------------------------------------------------------------------------------------------------------------------------------------------------------------	-------------------------------------------------------------------------------------------------------------------------------------------------------------------------------------------



<p>SquirrelView software</p> <p>Powerful and easy to use spreadsheet style software for configuring, downloading, displaying and analysing data from your Squirrel data logger. Upgrade to SquirrelView Plus and with just a few mouse clicks you will quickly be able to view real time charts or historical data. You can also quickly download the data for use in your favourite spreadsheet, database or analysis program.</p>	<p>Features:</p> <ul style="list-style-type: none"> • Storage of user settings on PC • Temperature profile feature • Upper and lower thresholds • Viewing of tabulated data • Real time metering for test purposes • Export of data to Excel • Built in report function
--------------------------------------------------------------------------------------------------------------------------------------------------------------------------------------------------------------------------------------------------------------------------------------------------------------------------------------------------------------------------------------------------------------------------------------------	-----------------------------------------------------------------------------------------------------------------------------------------------------------------------------------------------------------------------------------------------------------------------------------------------------------------------------------------------------



<p>Probes</p> <p>The OQ610 logger is suitable for use with our wide range of thermocouple sensors. Thermocouples have a quick response time and are suitable for a wide range of applications,</p>	<p>from small and delicate, to heavy industrial. Our full range of probes can be found in our Temperature and Humidity Probes datasheet, which is available on request.</p>
-----------------------------------------------------------------------------------------------------------------------------------------------------------------------------------------------------------	-----------------------------------------------------------------------------------------------------------------------------------------------------------------------------



中国代理商：
宏科汽车技术研究中心
广州市五山华南理工大学国家科技园
2号楼 504-505 室 邮编：510640
电话：020-38743030; 38743032;
020-38743233
传真：020-38743233
sales@hkaco.com
www.hkaco.com

Warranty: The OQ610 logger is manufactured by Grant Instruments and warranted against faulty materials or workmanship for one year. For repairs carried out under warranty, no charge is made for labour, materials or return carriage.
CE mark: The Grant OQ 610 data acquisition system bears a CE mark and meets relevant European directives.
Quality Statement: Grant Instruments operates a Quality Management System complying with ISO9001:2000. It is Grant's policy to supply customers with products which are fit for their intended purpose, safe in use, perform reliably to published specification and are backed by a fast and efficient customer support service.
Manufactured and designed in Cambridge, England.

Due to our policy of continuous improvements, specifications may change without prior notice. Grant believe that all information declared is correct at the time of issue. No liability is accepted for errors and omissions.