

GMP-compliant thermal mapping

- no travel
- no own instruments
- no special software



SERVICE DESCRIPTION

ELPRO Thermal Mapping Service

The easier way to a GMP-compliant mapping report

Do you run a facility for the storage of temperature-controlled goods and need a GMP-compliant mapping report? Tired of having to buy and configure data loggers and compile reports?

Here's how we can help:

The ELPRO Thermal Mapping Service is the world's simplest and most efficient way to get a GMP-compliant mapping report. No need to buy data loggers, no specialist software and a minimum of fuss. No matter where in the world your facility is: we don't need access to your site and no one needs to travel.

How it works:

You provide us with a floor plan of your facility. Based on its size and specific situation, our experienced climate control and thermal mapping specialists can give you a fixed price per measurement point. The measuring instruments are mailed to you with instructions on where to place them and how to switch them on. At the end of the mapping period, you simply collect the data loggers, send them back to us and that is all we need your staff to do.

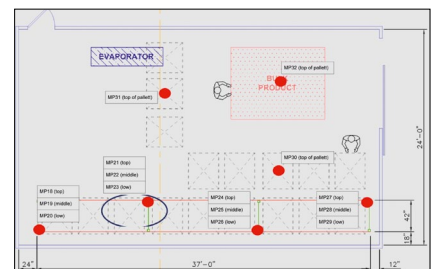
All we need is a floor plan and a member of your staff on site who can put the data loggers in place, press the TRANSIT button and simply collect the instruments at the end of the mapping period.

Your benefits:

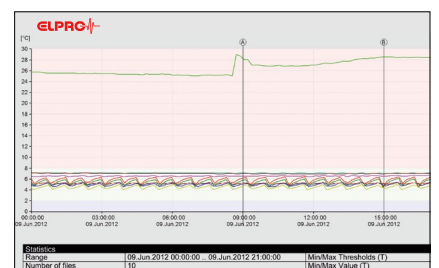
- GMP-compliant reports sent to you
- No traveling required
- No own instruments needed
- No need for special software
- No report compiling



... anywhere in the world



... all we need is a floor plan

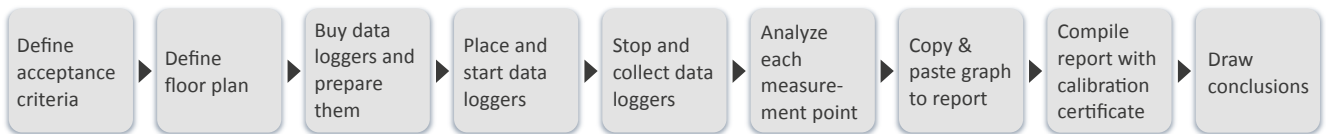


... a GMP-compliant report is compiled by ELPRO

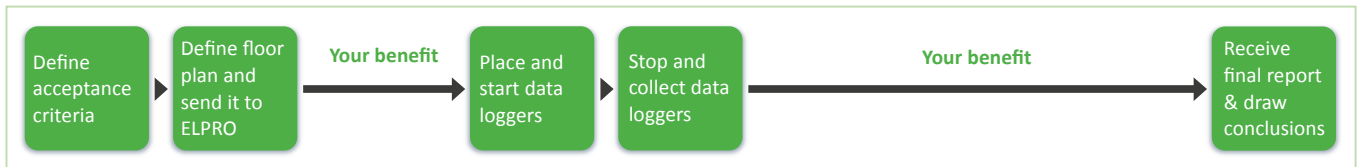
we prove it.



Traditional mapping process



Simplified process with ELPRO's Thermal Mapping Service



ELPRO: the most efficient Thermal Mapping Service

Using the floor plan provided by you, ELPRO thermal mapping specialists prepare a proposal for the measurement points. Once these have been agreed, ELPRO prepares and mails the calibrated LIBERO PDF Logger® to the site, together with instructions on where to place and how to start the instruments.

Using our detailed instructions and list of measurement points, your local warehouse or QA personnel puts the data loggers in place and starts them up. After mapping is complete, your staff presses the ARRIVED button and collects the instruments. Connecting

the LIBERO PDF Logger® to any computer (via USB port) automatically generates a PDF report.

Once we receive the PDF files by e-mail, we compile the final report, including a summary, graphs for each measuring point and calibration data for each instrument. All you need to do is draw your conclusions based on our summary and archive the GMP-compliant mapping report.



For more information please contact your local ELPRO representative at:
www.elpro.com



详细资料? 请联系我们: sales@hkaco.com

www.hkaco.com

广州: 400 999 3848

上海: 021-31215998

北京: 010-57815068

 Swiss Engineering